

SYSMAC

CX-One

FA Integrated Tool Package

CXONE-AL□□D-V4

CXONE-LT□□□-V4

SETUP MANUAL

OMRON

NOTE

All rights reserved. No part of this publication may be reproduced, stored in a retrieval system, or transmitted, in any form, or by any means, mechanical, electronic, photocopying, recording, or otherwise, without the prior written permission of OMRON.

No patent liability is assumed with respect to the use of the information contained herein. Moreover, because OMRON is constantly striving to improve its high-quality products, the information contained in this manual is subject to change without notice. Every precaution has been taken in the preparation of this manual. Nevertheless, OMRON assumes no responsibility for errors or omissions. Neither is any liability assumed for damages resulting from the use of the information contained in this publication.

Trademarks

- COMBICON is a registered trademark of Phoenix Contact.
- Microsoft, Windows, and Windows Vista are either registered trademarks or trademarks of Microsoft Corporation in the United States and other countries.
- ODVA, CIP, CompoNet, DeviceNet, and EtherNet/IP are trademarks of ODVA.

Other company names and product names in this document are the trademarks or registered trademarks of their respective companies.

Copyrights

Microsoft product screen shots reprinted with permission from Microsoft Corporation.

SYSMAC

CX-One

FA Integrated Tool Package

CXONE-AL□□D-V4

CXONE-LT□□□-V4


Setup Manual


Revised April 2016


Notice:

OMRON products are manufactured for use according to proper procedures by a qualified operator and only for the purposes described in this manual.

The following conventions are used to indicate and classify precautions in this manual. Always heed the information provided with them. Failure to heed precautions can result in injury to people or damage to property.

 **DANGER** Indicates an imminently hazardous situation which, if not avoided, will result in death or serious injury. Additionally, there may be severe property damage.

 **WARNING** Indicates a potentially hazardous situation which, if not avoided, could result in death or serious injury. Additionally, there may be severe property damage.

 **Caution** Indicates a potentially hazardous situation which, if not avoided, may result in minor or moderate injury, or property damage.

OMRON Product References

All OMRON products are capitalized in this manual. The word “Unit” is also capitalized when it refers to an OMRON product, regardless of whether or not it appears in the proper name of the product.

The abbreviation “Ch,” which appears in some displays and on some OMRON products, often means “word” and is abbreviated “Wd” in documentation in this sense.

The abbreviation “PLC” means Programmable Controller. “PC” is used, however, in some Programming Device displays to mean Programmable Controller.

Visual Aids

The following headings appear in the left column of the manual to help you locate different types of information.

Note Indicates information of particular interest for efficient and convenient operation of the product.

1,2,3... 1. Indicates lists of one sort or another, such as procedures, checklists, etc.

TABLE OF CONTENTS

PRECAUTIONS	xiii
1 Intended Audience	xiv
2 Safety Precautions	xiv
SECTION 1	
Overview	1
1-1 Overview of CX-One	2
1-2 Confirmation of CX-One Package Contents	3
1-3 Support Software in CX-One	6
1-4 System Requirements	9
SECTION 2	
Installation and Uninstallation	13
2-1 Installing the CX-One	14
2-2 CX-One Maintenance	28
SECTION 3	
Application Upgrades Using Auto Updates	37
3-1 Outline	38
3-2 Using Auto Update	38
3-3 Periodic Notification of Auto Updates	43
Appendix	
A CX-One Lite	47
Revision History	49

TABLE OF CONTENTS

About this Manual:

This manual describes the installation and operation of the CX-One FA Integrated Tool Package and includes the sections described below.

Please read this manual carefully and be sure you understand the information provided before attempting to install or operate the CX-One. Be sure to read the precautions provided in the following section.

Precautions provides general precautions for using the CX-One.

Section 1 provides an overview of the CX-One FA Integrated Tool Package, its contents, and system requirements.

Section 2 describes how to install and uninstall the software provided in the CX-One.

Section 3 describes the CX-One Auto Update.



WARNING Failure to read and understand the information provided in this manual may result in personal injury or death, damage to the product, or product failure. Please read each section in its entirety and be sure you understand the information provided in the section and related sections before attempting any of the procedures or operations given.

Terms and Conditions Agreement

Please read and understand this catalog before purchasing the products. Please consult your OMRON representative if you have any questions or comments.

● WARRANTY

- The warranty period for the Software is one year from the date of purchase, unless otherwise specifically agreed.
- If the User discovers defect of the Software (substantial non-conformity with the manual), and return it to OMRON within the above warranty period, OMRON will replace the Software without charge by offering media or download from OMRON's website. And if the User discovers defect of media which is attributable to OMRON and return it to OMRON within the above warranty period, OMRON will replace defective media without charge. If OMRON is unable to replace defective media or correct the Software, the liability of OMRON and the User's remedy shall be limited to the refund of the license fee paid to OMRON for the Software.

● LIMITATION OF LIABILITY

- THE ABOVE WARRANTY SHALL CONSTITUTE THE USER'S SOLE AND EXCLUSIVE REMEDIES AGAINST OMRON AND THERE ARE NO OTHER WARRANTIES, EXPRESSED OR IMPLIED, INCLUDING BUT NOT LIMITED TO, WARRANTY OF MERCHANTABILITY OR FITNESS FOR PARTICULAR PURPOSE. IN NO EVENT, OMRON WILL BE LIABLE FOR ANY LOST PROFITS OR OTHER INDIRECT, INCIDENTAL, SPECIAL OR CONSEQUENTIAL DAMAGES ARISING OUT OF USE OF THE SOFTWARE.
- OMRON SHALL HAVE NO LIABILITY FOR DEFECT OF THE SOFTWARE BASED ON MODIFICATION OR ALTERNATION TO THE SOFTWARE BY THE USER OR ANY THIRD PARTY.
- OMRON SHALL HAVE NO LIABILITY FOR SOFTWARE DEVELOPED BY THE USER OR ANY THIRD PARTY BASED ON THE SOFTWARE OR ANY CONSEQUENCE THEREOF.

● APPLICABLE CONDITIONS

USER SHALL NOT USE THE SOFTWARE FOR THE PURPOSE THAT IS NOT PROVIDED IN THE ATTACHED USER MANUAL.

● CHANGE IN SPECIFICATION

The software specifications and accessories may be changed at any time based on improvements and other reasons.

● ERRORS AND OMISSIONS

The information in this manual has been carefully checked and is believed to be accurate; however, no responsibility is assumed for clerical, typographical, or proofreading errors, or omissions.

PRECAUTIONS

This section provides general precautions for using the CX-One FA Integrated Tool Package.

The information contained in this section is important for the safe and reliable application of the CX-One FA Integrated Tool Package. You must read this section and understand the information contained before attempting to set up or operate the CX-One FA Integrated Tool Package.


1	Intended Audience	xiv
2	Safety Precautions.....	xiv

1 Intended Audience

This manual is intended for the following personnel, who must also have knowledge of electrical systems (an electrical engineer or the equivalent).


- Personnel in charge of installing FA systems.
- Personnel in charge of designing FA systems.
- Personnel in charge of managing FA systems and facilities.

2 Safety Precautions

 **Caution** When performing any of the following operations, always check the network address and node address of the other node (PLC) and the node address and unit number of the mounted Unit (PLC CPU Bus Unit or Special I/O Unit) or the node address of the Component (DeviceNet Master/Slave or CompoWay/F Slave), and be sure that these operations can be performed safely for the current status of the node (Unit or Component):


- Transferring parameter or program data to the other node
- Changing the operating mode of the other node

Unexpected operation may result if parameter or program data is transferred to the wrong node (DeviceNet Master/Slave or CompoWay/F Slave), the operating mode of the wrong node is changed, or the other node is not in a suitable status to receive the program or parameter data or the operating mode change.

 **Caution** Particularly when changing the target PLC to any PLC other than the relay PLC, check the node address and node number of the target PLC carefully before executing the change.) Unexpected operation and injury may result if the wrong PLC is set as the target PLC.

- Changing the operating mode
- Transferring or verifying user-set data link tables
- Transferring or verifying routing tables
- Performing I/O table operations (including transferring CPU Bus Unit or Special I/O Unit parameters)

Note Operations performed from the CX-Integrator are performed for the target PLC, which is not necessarily the same as the relay PLC.

 **Caution** When transferring parameters that have been created or edited on the computer to actual Units (PLC CPU Bus Units or PLC Special I/O Units) or to actual components (DeviceNet Masters/Slaves or CompoWay/F Slaves), or when resetting Units mounted on other PLC nodes or components (DeviceNet Masters/Slaves or CompoWay/F Slaves) connected via communications with other PLC nodes, always check the identifying numbers of the actual Units or Components (i.e., the unit numbers and unit addresses or node addresses) before executing the transfer or reset. Unexpected operation and injury may result if parameters are transferred to the wrong Unit or components, or the wrong Unit or component is reset.

Observe the following precautions when using the CX-One.

- When saving or opening a project file, always confirm the location of the folder and the file name before executing the save or open. The CX-One automatically switches the folder when saving and opening.
- Before changing the operating mode, always confirm that doing so will not adversely affect system operation.
- Always check the operation of programs and parameters sufficiently before using them for actual system operation.
- Confirm that resetting CPU Bus Units, Special I/O Units, and DeviceNet Master/Slave Units will not adversely affect system operation before resetting these Units.

SECTION 1

Overview

This section provides an overview of the CX-One FA Integrated Tool Package, its contents, and system requirements.

1-1	Overview of CX-One	2
1-1-1	The CX-One FA Integrated Tool Package	2
1-1-2	CX-One Features	2
1-2	Confirmation of CX-One Package Contents	3
1-2-1	Confirmation of CX-One Package Contents	3
1-2-2	User Registration	5
1-3	Support Software in CX-One	6
1-3-1	Support Software in CX-One and Reference Manuals	6
1-3-2	Starting Support Software in CX-One	8
1-4	System Requirements	9
1-4-1	System Requirements	9
1-4-2	Hard Disk Space Requirements for Support Software in CX-One ..	11

1-1 Overview of CX-One

1-1-1 The CX-One FA Integrated Tool Package

The CX-One FA Integrated Tool Package integrates all of the Support Software for OMRON PLCs and Components. Although previously it was necessary to purchase, install, run, and connect online to the PLC separately for the Support Software for each Unit, the CX-One now provides an integrated development environment based on the CPS (Component and Network Profile Sheet) for each OMRON Unit or Component. If the CX-One is installed in a single computer, an integrated operating environment can be used all the way from setting OMRON PLC Units through system startup and monitoring to greatly increase system setup efficiency.

1-1-2 CX-One Features

Integrated Software Management for OMRON PLCs and Components

- One computer with the CX-One installed provides the Support Software required to handle any OMRON product.
- All of the Support Software can be installed with a single license.
- Files saved from the various Support Software can be centrally managed in one location.

Support Software for CPU Bus Units and Special I/O Units can be started from the I/O tables.

When Support Software is started from the I/O tables (i.e., the Unit Configuration Table registered in the PLC), PLC and Unit settings can be inherited so that they do not have to be re-entered every time Support Software is started.

Component and Network Profile Sheets (CPS)

- CPU Bus Units and Special I/O Units can be set without concern for memory addresses and without relying on operation manuals. Parameter names, selections, and setting ranges are automatically displayed.
- Online, settings for virtual Units on the computer can be compared to the settings in the actual Units, with any differences displayed in orange in the comparison results.
- The Unit configuration in I/O tables is displayed using Unit model numbers.
- Model and unit version checks can be performed when transferring data to actual Units.
- Device types on the network can be confirmed using Unit models.

Note Component and Network Profile Sheet (CPS) files contain CS/CJ-series Unit definitions or Component definitions within the CX-One. CPS files are provided in XML format. The CX-One uses CPS files to recognize CS/CJ-series Units. Settings for CPU Bus Units and Special I/O Units are also created based on CPS files.

1-2 Confirmation of CX-One Package Contents

1-2-1 Confirmation of CX-One Package Contents

CX-One Model Number and Contents

Name	Model	Installable Support Software		Other included data
CX-One Ver. 4.□	CXONE-AL□□D-V4	CX-Programmer	Ver. 9	<ul style="list-style-type: none"> • OMRON Function Blocks (FB) • Smart Active Parts (SAP) • CPS files • Manual (PDF)
		CX-Integrator	Ver. 2	
		CX-Simulator	Ver. 1	
		CX-Designer	Ver. 3	
		CX-Motion	Ver. 2	
		CX-Motion-NCF	Ver. 1	
		CX-Motion-MCH	Ver. 2	
		CX-Position	Ver. 2	
		CX-Drive	Ver. 2	
		NV-Designer	Ver. 1	
		CX-Protocol	Ver. 1	
		CX-Process Tool	Ver. 5	
		Faceplate Auto-Builder for NS	Ver. 3	
		CX-Thermo	Ver. 4	
		CX-FLnet	Ver. 1	
		Network Configurator	Ver. 3	
		CX-Server	Ver. 5	
SwitchBox Utility	Ver. 1			

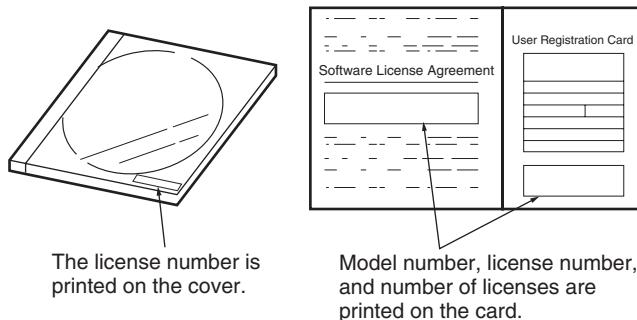
CX-One Contents

The contents of CX-One are listed in the following table. Please confirm that you have received everything.

CXONE-AL□□D-V4 CX-One FA Integrated Tool Package

Installation Disks (CXONE-AL□□D-V4: DVD)	1 disk
CX-One Introduction Guide (Cat. No. R145)	PDF manuals in the DVD (Only the main manuals are listed.)
CX-Programmer Introduction Guide (Cat. No. R132)	
CX-Designer Introduction Guide (Cat. No. V089)	
CX-Programmer Function Block/Structured Text Introduction Guide (Cat. No. R144)	
SFC Introduction Guide (Cat. No. R149)	
Integrated Simulation Introduction Guide (Cat. No. V408)	
CX-One Setup Manual (Cat. No. W463) (this manual)	
CX-Programmer Operation Manual (Cat. No. W446)	
CX-Programmer Operation Manual: Function Blocks and Structured Text (Cat. No. W447)	
CX-Programmer Operation Manual: SFC (Cat. No. W469)	
CX-Integrator Operation Manual (Cat. No. W464)	
CX-Simulator Operation Manual (Cat. No. W366)	
CX-Designer User's Manual (Cat. No. V099)	
NV-series PT Programming Manual (V104)	
CX-Motion-NCF Operation Manual (Cat. No. W436)	
CX-Motion-MCH Operation Manual (Cat. No. W448)	
CX-Position Operation Manual (Cat. No. W433)	
CX-Drive Operation Manual (Cat. No. W453)	
CX-Protocol Operation Manual (Cat. No. W344)	
CX-Process Tool Software Operation Manual (Cat. No. W372)	
Faceplate Auto-Builder for NS Operation Manual (Cat. No. W418)	
Smart Function Blocks Reference Manual (Cat. No. W442)	
Smart Active Parts Reference Manual (See note.)	
CX-Thermo Operation Manual	Online help only
Software License Agreement/User Registration Card	1

Note PDF manuals are provided for each Unit.



Note The license number required for installation is printed on the Software License Agreement/User Registration Card. Place this card in a safe place and be sure not to lose the license number.

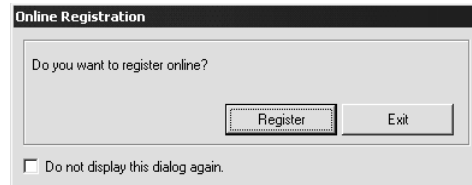
1-2-2 User Registration

Always perform user registration before using the CX-One.

Online User Registration (Internet Connection Required)

Registering from the Online Registration Dialog Box

- 1,2,3... 1. The following Online Registration Dialog Box will be displayed after when computer is restarted upon completion of CX-One installation.



2. Click the **Register** Button. A wizard will connect you to the OMRON CX-One website. (See note.)

Note If the **Exit** Button is clicked to cancel online registration, the Online Registration Dialog Box will be displayed every time Support Software in CX-One is started.

3. Enter the information required for user registration according to the site windows. Use the product key and license number given on the Software License Agreement/User Registration Card provided with the CX-One.
4. After completion of registration, registration confirmation will be sent to the email address input during the registration procedure.

Note The Online Registration Dialog Box will be displayed even if online registration has already been completed. If this happen, select the *Do not display this dialog again* option and click the **Exit** Button. Also use this procedure in the following cases.

- The Windows login name is different from the registered name.
- User registration was performed using the User Registration Postcard.

Online Registration from the CX-Programmer or other Support Software in CX-One

OMRON's CX-One website will be displayed if **Help - Online Registration** is selected from the menu bar of CX-Programmer or other Support Software in CX-One. Enter the information required for user registration according to the site windows. Use the product key and license number given on the Software License Agreement/User Registration Card provided with the CX-One.

Note Do not register more than once. For example, if you're returned the card, do not register online.

Using the User Registration Postcard

Enter the required information on the User Registration Postcard provided with the CX-One and send the card.

Note Approximately two weeks will be required from the time the User Registration Postcard is posted until confirmation of registration is returned to you. Downloading OMRON Standard Libraries and other operations allowed only for registered users will not be possible during this period.

1-3 Support Software in CX-One

1-3-1 Support Software in CX-One and Reference Manuals

The following tables lists the Support Software that can be installed from CX-One and the reference manuals for each.

Support Software in CX-One	Outline	Documentation (PDF manuals provided in DVD)
CX-Programmer	Application software to create and debug programs for SYSMAC CS/CJ/CP/NSJ-series, C-series, and CVM1/C-series CPU Units, and to create and monitor data for SYSMAC CS/CJ-series Position Control Units (High-speed Type only).	CX-Programmer Operation Manual (Cat. No. W446) CX-Programmer Operation Manual: Function Blocks and Structured Text (Cat. No. W447) CX-Programmer Operation Manual: SFC (Cat. No. W469)
CX-Integrator	Application software to build and set up FA networks, such as Controller Link, DeviceNet, CompoNet, CompoWay, and Ethernet networks. The Routing Table Component and Data Link Component can be started from here. DeviceNet Configuration functionality is also included.	CX-Integrator Operation Manual (Cat. No. W464)
Switch Box Utility	Utility software that helps you to debug PLCs. It helps you to monitor the I/O status and to monitor/change present values within the PLC you specify.	Online Help
CX-Protocol	Application software to create protocols (communications sequences) between SYSMAC CS/CJ/CP/NSJ-series or C200HX/HG/HE Serial Communications Boards/Units and general-purpose external devices.	CX-Protocol Operation Manual (Cat. No. W344)
CX-Simulator	Application software to simulate SYSMAC CS/CJ/CP/NSJ-series CPU Unit operation on the computer to debug PLC programs without a CPU Unit.	CX-Simulator Operation Manual (Cat. No. W366)
CX-Position	Application software to create and monitor data for SYSMAC CS/CJ-series Position Control Units (except for High-speed Type).	CX-Position Operation Manual (Cat. No. W433)
CX-Motion-NCF	Application software to monitor and set parameters for SYSMAC CS/CJ-series Position Control Units and Servo Drivers that support MECHATROLINK-II communications.	CX-Motion-NCF Operation Manual (Cat. No. W436)
CX-Motion-MCH	Application software to create data for SYSMAC CS/CJ-series MCH Units, create motion programs, and perform monitoring.	CX-Motion-MCH Operation Manual (Cat. No. W448)
CX-Motion	Application software to create data for SYSMAC CS/CJ-series, C200HX/HG/HE, and CVM1/CV-series Motion Control Units, and to create and monitor motion control programs.	---
CX-Drive	Application software to set and control data for Inverters and Servos.	CX-Drive Operation Manual (Cat. No. W453)
CX-Process Tool	Application software to create and debug function block programs for SYSMAC CS/CJ-series Loop Controllers (Loop Control Units/Boards, Process Control CPU Units, and Loop Control CPU Units).	CX-Process Tool Operation Manual (Cat. No. W372)
Faceplate Auto-Builder for NS	Application software that automatically outputs screen data as project files for NS-series PTs from tag information in function block programs created with the CX-Process Tool.	Faceplate Auto-Builder for NS Operation Manual (Cat. No. W418)
CX-Designer	Application software to create screen data for NS-series PTs.	CX-Designer User's Manual (Cat. No. V099)

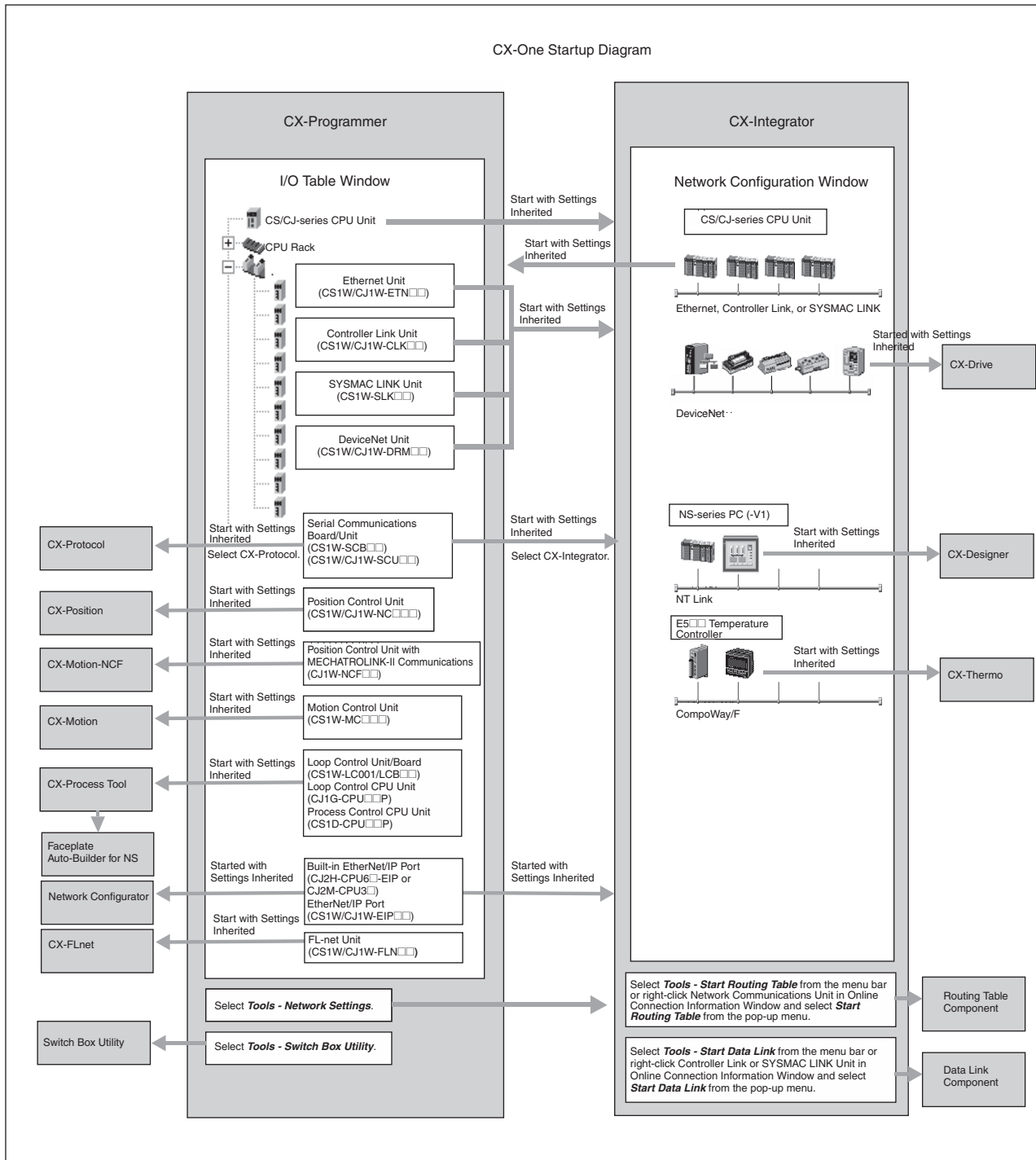
Support Software in CX-One	Outline	Documentation (PDF manuals provided in DVD)
NV-Designer	Application software to create screen data for the NV-series PTs.	NV-series PT Programming Manual (V104)
CX-Configurator FDT	Application software for setting various units by installing its DTM module.	---
CX-Thermo	Application software to set and control parameters in components such as Temperature Control Units.	Online Help
CX-FLnet	Application software for system setting and monitoring of SYSMAC CS/CJ-series FL-net Units	---
Network Configurator	Application software for setting tag data links for CJ2(Built-in EtherNet/IP) CPU Units and EtherNet/IP Units.	---
CX-Server	Middleware necessary for CX-One applications to communicate with OMRON components, such as PLCs, Display Devices, and Temperature Control Units.	---
PLC Tools (Installed automatically.)	A group of components used with CX-One applications, such as the CX-Programmer and CX-Integrator. Includes the following: I/O tables, PLC memory, PLC Setup, Data Tracing/Time Chart Monitoring, PLC Error Logs, File Memory, PLC clock, Routing Tables, and Data Link Tables.	Refer to documentation of individual Support Software.

The following utilities are stored in the Utility folder on the DVD installation disk. Install any required utilities individually.

Utility	Location	Description
OMRON Automation Software Remover	\\Utility\CXOneRemover	This utility removes files that are related to problems that can occur during CX-One installation to allow you to re-install the CX-One. If problems occur during CX-One installation, use this utility.
NT Support Software	\\Utility\NT-SupportTool	This utility is used to create screen data for NT-series Programmable Terminals.

1-3-2 Starting Support Software in CX-One

Support Software in CX-One can be started from the I/O tables in the CX-Programmer, from the Network Configuration Window in the CX-Integrator, or from the Tools Menus as shown in the following diagram. This is called the Specialized Support Tool startup function and it is enabled when the CX-Programmer and other Support Software is installed from the CX-One.



Starting while Inheriting Settings

- Setting the device type is not required every time different Support Software is started.
- The online connection is also inherited by the newly opened Support Software.
- New project files are automatically created for the newly opened Support Software.

Starting with or without Inheriting Settings

If **Open - Save As** is selected after starting Support Software, the save to folder will be the same as the one used with the CX-Programmer.

1-4 System Requirements

1-4-1 System Requirements

The system requirements for the CX-One are given in the following table.

Item	Requirement
Operating system (OS) (See note 1.)	Microsoft Windows XP (Service Pack 3 or higher) Microsoft Windows Vista (See note 4.) Microsoft Windows 7 (See note 4.) Microsoft Windows 8 (See notes 4 and 5.) Microsoft Windows 8.1 (See note 4 and 5.) Microsoft Windows 10 (See note 4 and 6.)
Computer	Computer with a processor recommended by Microsoft.
Memory	Memory capacity recommended by Microsoft.
Hard disk	Approx. 4.0 GB or more available space is required to install the complete CX-One package.
Display	XGA (1024 x 768), High Color (16 bit) or better
Disk drive	DVD-ROM drive
Communications ports	RS-232C port, USB port, or Ethernet port (see note 3.)
Other	Internet access is required for online user registration, including a modem or other hardware connection method.

Note

- (1) CX-One Operating System Precaution
 - 1) System requirements and hard disk space may vary with the system environment.
 - 2) Except for Windows XP 64-bit version.
- (2) The amount of memory required varies with the Support Software used in CX-One for the following Support Software. Refer to user documentation for individual Support Software for details.
CX-Programmer, CX-Designer, CX-Thermo, CX-Simulator, CX-Protocol, CX-Motion, CX-Drive, CX-Process Tool, and Faceplate Auto-Builder for NS
- (3) Refer to the hardware manual for your PLC for hardware connection methods and cables to connect the computer and PLC.
While the computer and a CJ2/CP-series PLC are connected via a USB cable, the computer cannot go on standby.

- (4) Using the CX-One on Microsoft Windows Vista or Newer Windows OS
The following restrictions apply to some application operations.

Application	Restriction
CX-Designer/ NV-Designer	If you use a new font (e.g., Meiryō) in a project on Windows Vista or a newer OS, the font size on labels may be bigger and the text may protrude from the components if the project is transferred from CX-Designer running on Windows XP or an earlier OS to the NS/NSJ.
CX-Programmer/ CX-Integrator/ Network Configurator	Although you can install CPS files, EDS files, Expansion Modules, and Interface Modules, the virtual store function of the OS imposes the following restrictions on the use of the software after installation. These restrictions will not exist if application data is installed using Run as Administrator. <ul style="list-style-type: none"> • If another user logs in, the applications data will need to be installed again. • The CPS files will not be automatically updated.
CX-Server	Restrictions are imposed on the following functions. <ul style="list-style-type: none"> • The driver cannot be changed from the default setting if Controller Link is set as the network type in the Change PLC dialog box. • Online connections will not be possible through Controller Link Boards or SYSMAC LINK Boards. • Online connections using FinsGateway as the network type will not be possible from the CX-Programmer or CX-Integrator. • Communications will not be possible though a CS1 Board and PCI bus.

- (5) The following restrictions exist if the CX-One is used on Microsoft Windows 8.

- 1) Start Menu Shortcuts
A Start Menu is not displayed on the Windows 8 desktop, so the CX-One applications cannot be started from the Start Menu. If you are using Windows 8, start the applications in CX-One from the Start Screen.
- 2) Installing .NET Framework 3.5 SP1
Some of the applications in CX-One require .NET Framework 3.5 SP1. If Windows 8 is not connected to the Internet, .NET Framework 3.5 SP1 cannot be installed. If necessary, connect to the Internet and install .NET Framework 3.5 SP1.

- (6) The following restriction applies when the CX-One is used on Microsoft Windows 10.

- 1) Installing .NET Framework 3.5 SP1
Some of the applications in CX-One require .NET Framework 3.5 SP1. If Windows 10 is not connected to the Internet, .NET Framework 3.5 SP1 cannot be installed. If necessary, connect to the Internet and install .NET Framework 3.5 SP1.

1-4-2 Hard Disk Space Requirements for Support Software in CX-One

Support Software in CX-One	Approx. hard disk space required.	Remarks
CX-Programmer	Approx. 330 MB	Options can be selected or cleared to install or not install individual Support Software.
CX-Integrator	Approx. 260 MB	
CX-Position	Approx. 15 MB	
CX-Motion	Approx. 45 MB	
CX-Motion-NCF	Approx. 260 MB	
CX-Motion-MCH	Approx. 60 MB	
CX-Drive	Approx. 200 MB	
CX-Designer	Approx. 750 MB	
NV-Designer	Approx. 110 MB	
CX-Process Tool	Approx. 100 MB	
Faceplate Auto-Builder for NS	Approx. 70 MB	
CX-Protocol	Approx. 20 MB	
CX-Simulator	Approx. 45 MB	
CX-Thermo	Approx. 130 MB	
CX-Flnet	Approx. 2 MB	
Switch Box Utility	Approx. 5 MB	
Network Configurator	Approx. 20 MB	
CX-Server and PLC Tools	Approx. 700 MB	Always installed.

- Note**
- (1) For CX-One installation, hard disk space (1.2 GB min.) is also required to install .NET Framework in addition to the above hard disk space requirements.
 - (2) If the complete CX-One package is installed, approximately 4.0 GB of hard disk space will be required. When installing software, work space for installation is additionally required. Check available space on your hard disk before installing software.

SECTION 2

Installation and Uninstallation

This section describes how to install and uninstall the software provided in the CX-One.

- 2-1 Installing the CX-One 14
 - 2-1-1 Confirmations before Installation..... 14
 - 2-1-2 Installing the CX-One..... 14
- 2-2 CX-One Maintenance 28
 - 2-2-1 Modifying the Installed Support Software in the CX-One..... 28
 - 2-2-2 Removing all the Support Software in the CX-One..... 31
 - 2-2-3 Uninstalling the CX-Server 33

2-1 Installing the CX-One

2-1-1 Confirmations before Installation

Time Requirements

The CX-One FA Integrated Tool Package integrates all of the Support Software for OMRON PLCs and Components. If the complete CX-One package is installed, between approximately 15 and 45 minutes will be required for installation depending on the performance of the computer.

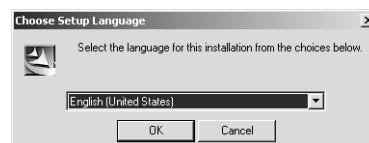
Precautions for Installation

- Close all programs running on Windows before starting the installation procedure.
- The CX-One cannot be installed from a network drive, such as a DVD drive or hard disk drive shared on a network. Always install the CX-One from a DVD drive on the computer onto which the software is being installed.
- Do not install onto a compressing drive. Recovery will not be possible if file corruption occurs.
- Do not stop the setup process in the middle. Copied files may remain in the installation directory.
- Do not turn OFF or reset the computer in the middle of the installation process. Computer data may become corrupted.
- For Windows login users, the administrator or a user with administrator rights must perform the installation. Other users will not have sufficient write permissions and access errors will occur.
- It may be necessary to restart Windows after finishing the installation. If required, restart Windows according to the messages displayed by the Installer.
- If the CX-Programmer for CP1E is installed on the computer, uninstall it before installing the CX-One. All of the functionality supported by the CX-Programmer for CP1E is supported by the CX-One.

2-1-2 Installing the CX-One

The following procedure is for installing the CX-One when none of the Support Software in the CX-One has been previously installed.

- 1,2,3...**
1. Insert disk of the CX-One installation disk (DVD) into the DVD drive.
 2. The setup program will start automatically and the Choose Setup Language Dialog Box will be displayed.



The language of the operating system running on the computer will be selected automatically.

If the above dialog box is not displayed, double-click the DVD driver from the Explorer to display it.

Select the language to be installed and then click the **OK** Button.

Note The CX-Programmer, CX-Integrator, and CX-Designer support languages other than English and Japanese (including Italian, Spanish, German, French, Simplified Chinese, Traditional Chinese, Russian, and Turkish). The CX-Programmer also supports Korean. For other Support Software, the English version will be installed if the selected language is not supported.

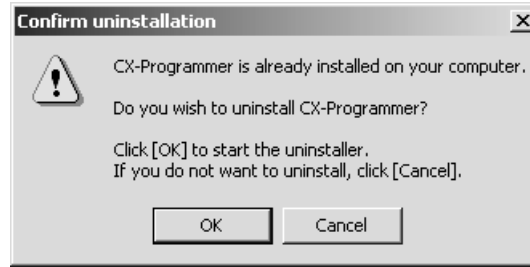
When the **OK** Button is clicked, a splash window for the CX-One will be displayed, followed by the Setup Wizard.

3. If the CX-Server is already installed on the computer, the following dialog box will be displayed as a prompt to delete the older version of the CX-Server.

Click the **OK** Button and uninstall the CX-Server. If the **Cancel** Button is clicked, CX-One installation will be exited.

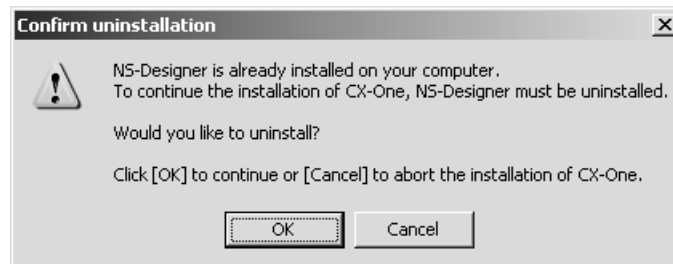
If an earlier version of any of the Support Software is already installed in the computer, one of the following dialog boxes will be displayed.

Dialog Box When an Earlier Version of the CX-Programmer Is Installed



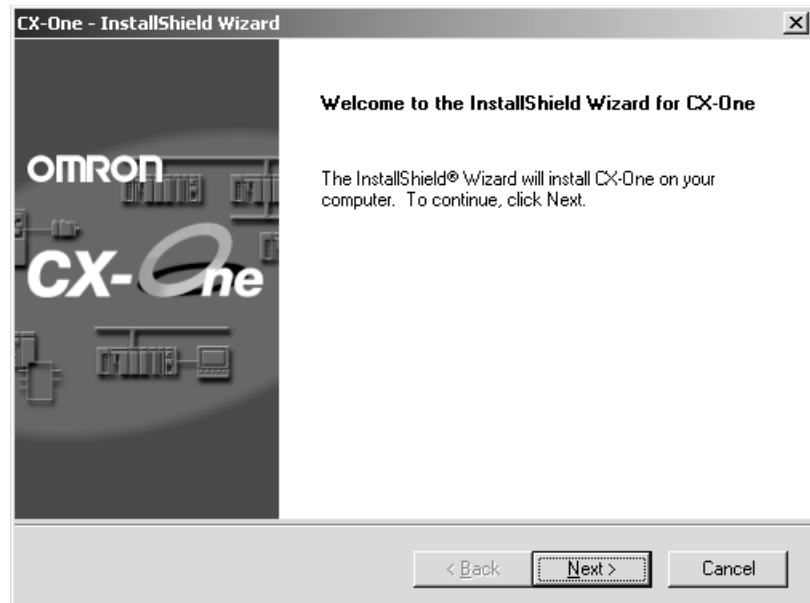
Click the **OK** Button and uninstall the earlier version of the CX-Programmer. If the **Cancel** Button is clicked, CX-One installation will continue without uninstalling the earlier version of the CX-Programmer. This would result in there being two versions of the CX-Programmer installed at the same time, so we recommend always clicking the **OK** Button.

Dialog Box When an Earlier Version of Other Support Software Is Installed

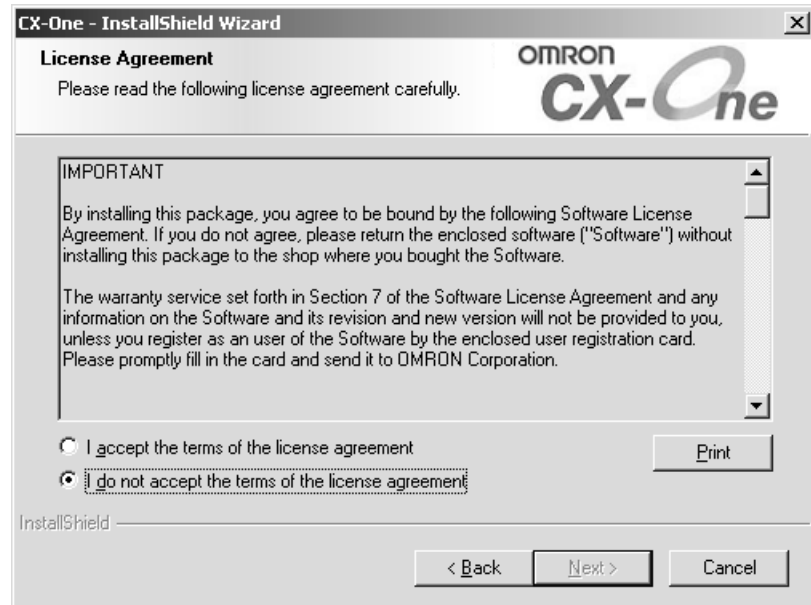


Click the **OK** Button and uninstall the earlier version of the Support Software. If the **Cancel** Button is clicked, CX-One installation will be canceled.

4. The CX-One Setup Wizard will be started. Click the **Next** Button.

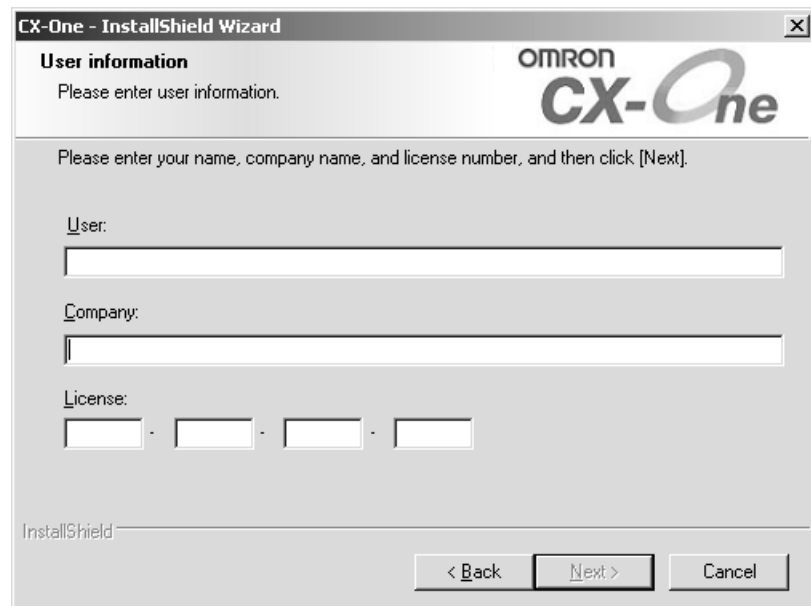


5. The License Agreement Dialog Box will be displayed.



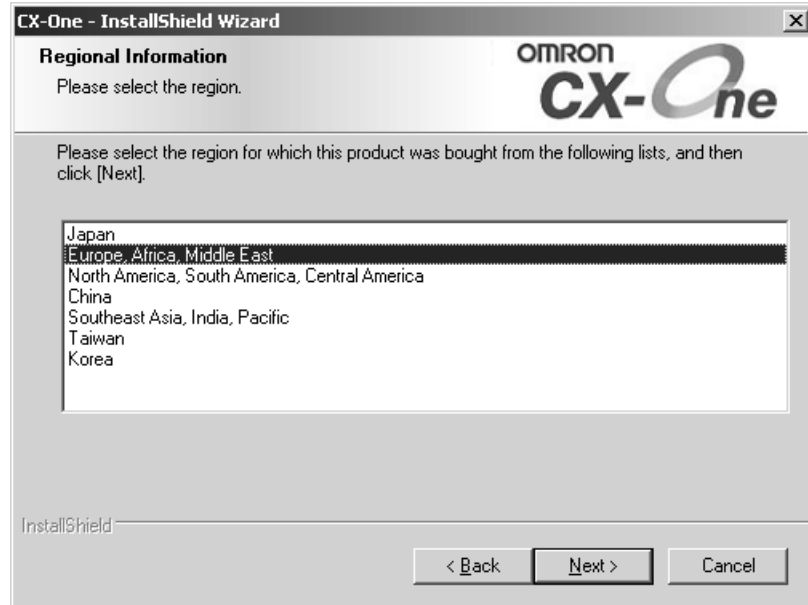
Read the license agreement completely and if you accept all of the terms, select the *I accept the terms of the license agreement* Option and click the **Next** Button.

6. The User Information Dialog Box will be displayed.



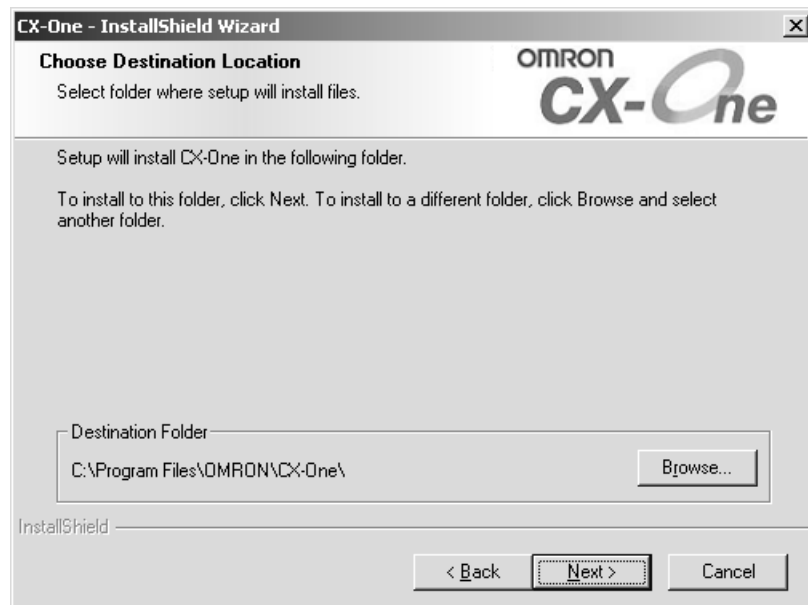
The default names registered in the computer will be entered for the user name and company name. Enter the license number and click the **Next** Button. The license number is given on the Software License/Registration Card provided with the product.

- The Regional Information Dialog Box will be displayed.



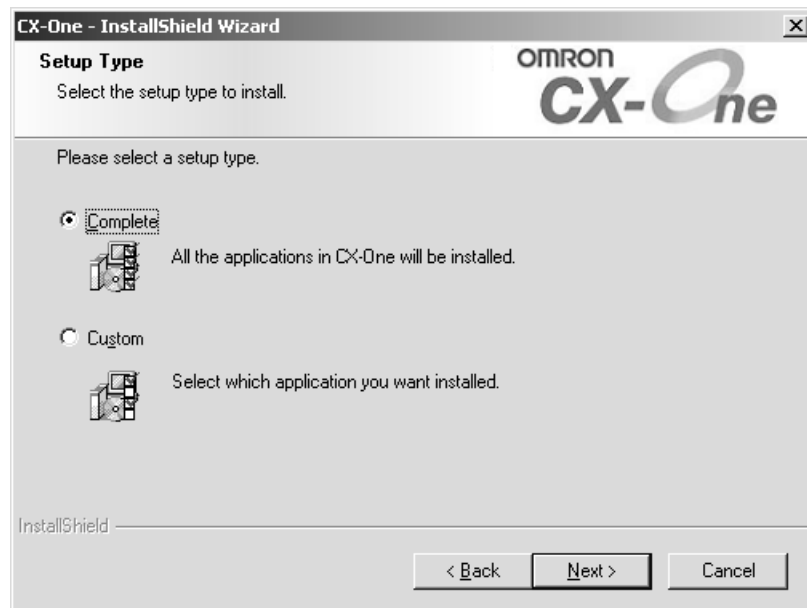
Select the region in which the software was purchased and click the **Next** Button.

- The Choose Destination Location Dialog Box will be displayed.



Select the destination location and click the **Next** Button. By default, the CX-One will be installed in C:\Program Files\OMRON\CX-One\.

- The Setup Type Dialog Box will be displayed.

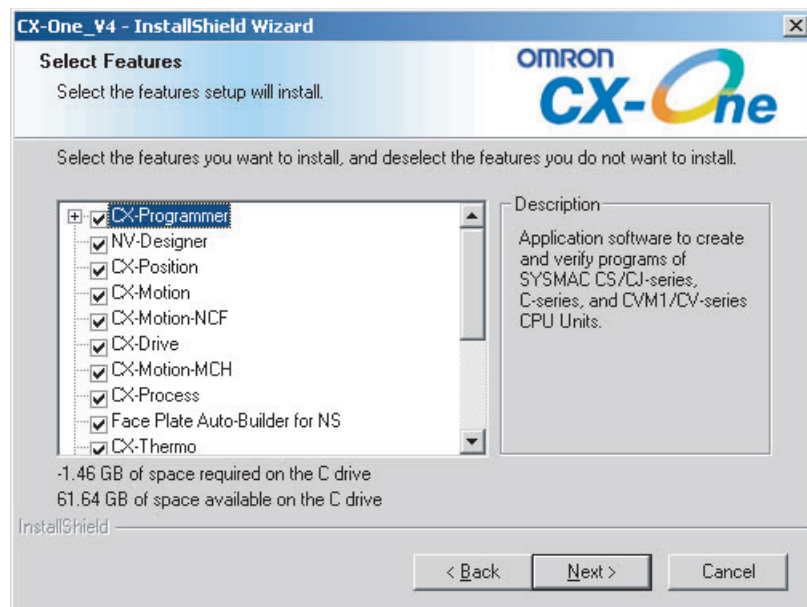


Select the *Complete* or *Custom* Option and click the **Next** Button.

Note

- (1) CX-One installation will require approximately the same amount of time (approximately 15 to 40 minutes) regardless of whether *Complete* or *Custom* is selected. As a rule, select *Complete* and install the entire package at the same time provided that there is sufficient disk space available.
- (2) CX-Configurator FDT will normally not be installed. Select *Custom* and then select *CX-Configurator FDT* to install it.

The Select Features Dialog Box will be displayed if *Custom* was selected.



Note The above dialog box will not be displayed if *Complete* is selected. Proceed to step 10.

Select the features to be installed and click the **Next** Button.

Options

- CX-Programmer
- NV-Designer
- CX-Position
- CX-Motion
- CX-Motion-NCF
- CX-Drive
- CX-Motion-MCH
- CX-Process
- Face Plate Auto-Builder for NS
- CX-Thermo
- CX-Simulator
- SwitchBox
- CX-FLnet
- CX-Server (Selected and grayed out.)
- CX Common Tools (Selected and grayed out.)

Note CX Common Tools includes the following applications.

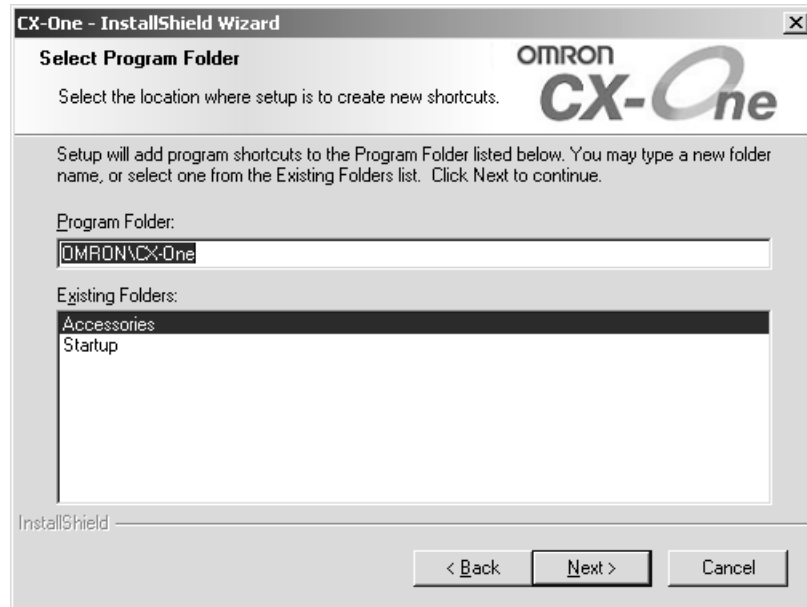
- CX-Integrator
- CX-Designer
- CX-Protocol
- Network Configurator
- CX-Configurator FDT
- PLC Tools

10. If *Complete* was selected or if *Custom* was selected and the Smart FB Library feature was selected, the *Choose Destination Location of the OMRON FB Library* Dialog Box will be displayed.



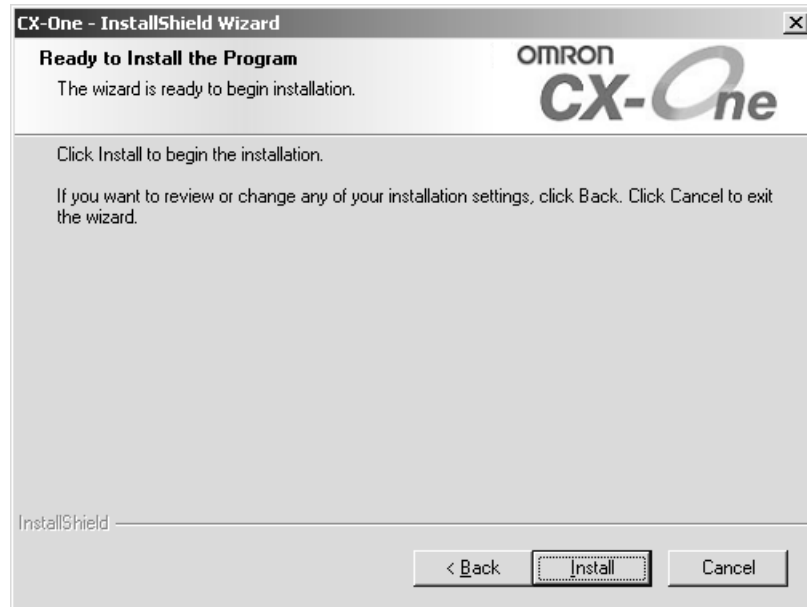
Check the destination location and click the **Next** Button. By default, the Smart FB Library will be install in C:\Program Files\OMRON\CX-One\FBL.

11. The Select Program Folder Dialog Box will be displayed.



Specify the location to add a shortcut in the program folder of the Windows Start Menu and click the **Next** Button.

- 12. The Ready to Install the Program Dialog Box will be displayed.



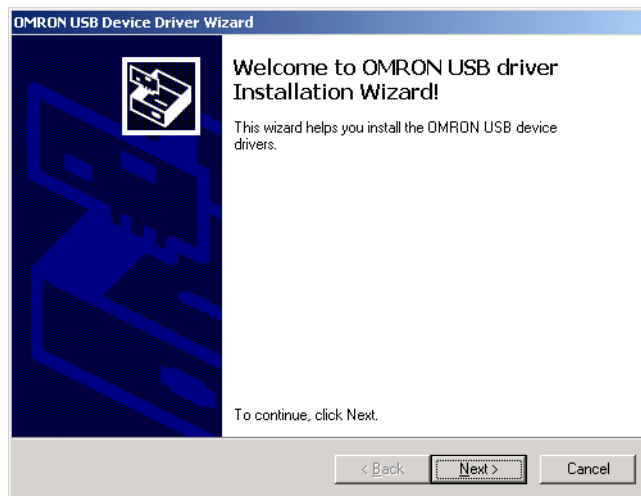
Click the **Install** Button. The Installer will start the installation.

To check the installation settings, click the **Back** Button. To cancel installation, click the **Cancel** Button.

Installing the OMRON USB Device Driver

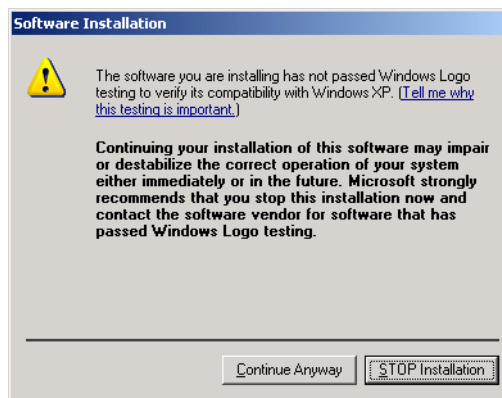
The OMRON USB driver Installation Wizard is displayed during the installation.

- 13. Click the **Next** Button.



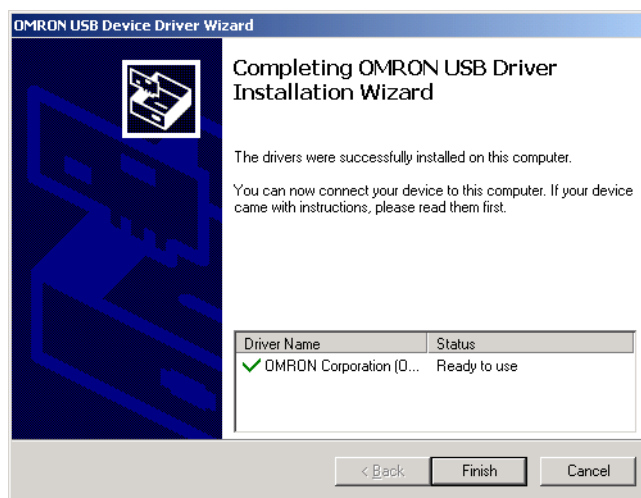
The following dialog box is displayed.

14. Click the **Continue Anyway** Button.



After the USB device driver is installed, the following dialog box is displayed.

15. Click the **Finish** Button.



The USB device driver is installed and installation of the Sysmac Studio continues.

Installing WinPCap

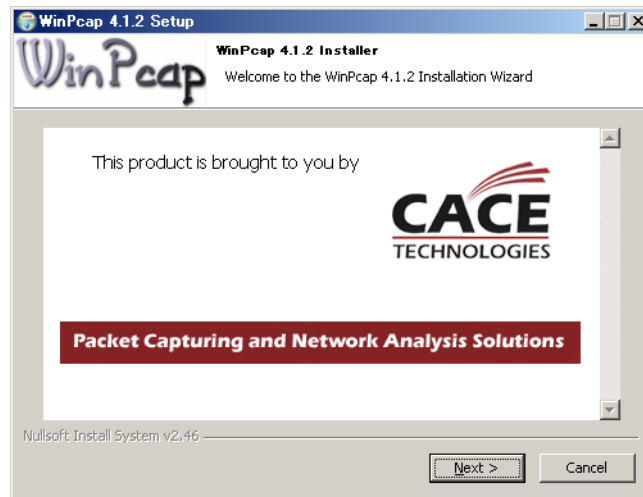
During the installation, a dialog box will prompt you to install the WinPCap component of the communications middleware.

- 16. Click the **OK** Button.



The WinPCap Setup Wizard is displayed.

- 17. Click the **Next** Button.



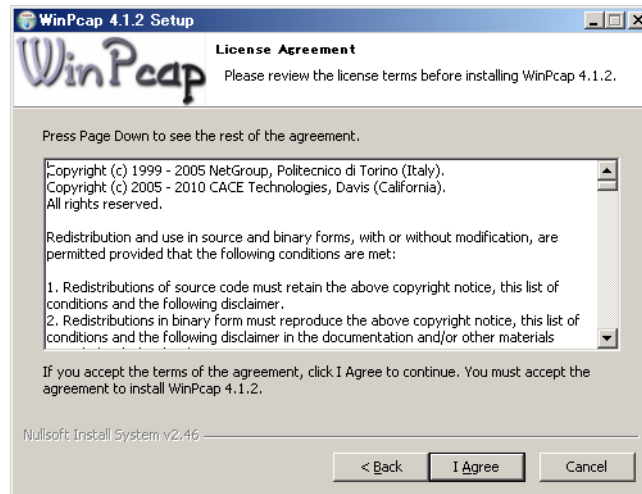
The WinPCap Installation Wizard is displayed.

- 18. Click the **Next** Button.



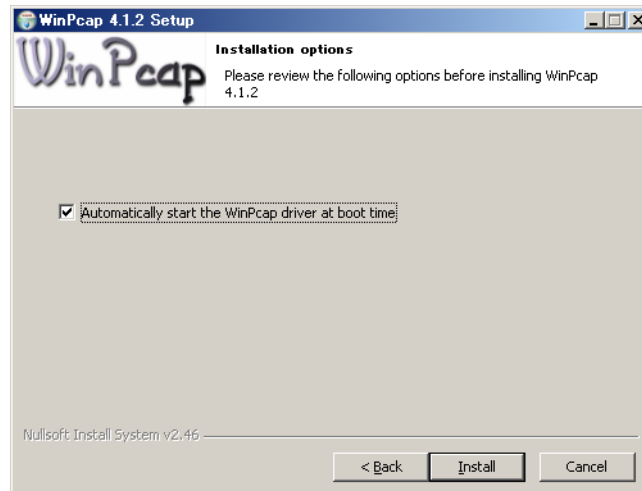
The License Agreement Dialog Box is displayed.

- 19. Read the License Agreement carefully. If you agree to all of the conditions, click the **I Agree** Button.



The *Installation options* Dialog Box is displayed.

20. Select the *Automatically start the WinPcap driver at boot time* Option, and then click the **Install** Button.



Installation of WinPCap starts.

21. Click the **Finish** Button.

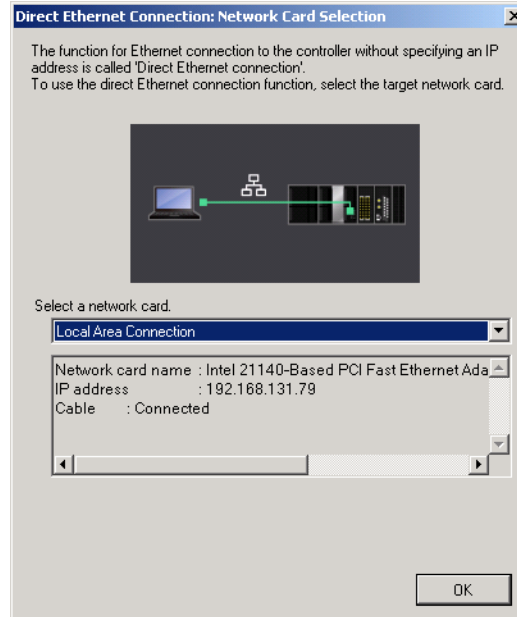


WinPCap is installed and installation of the Sysmac Studio continues.

Ethernet Card Selection

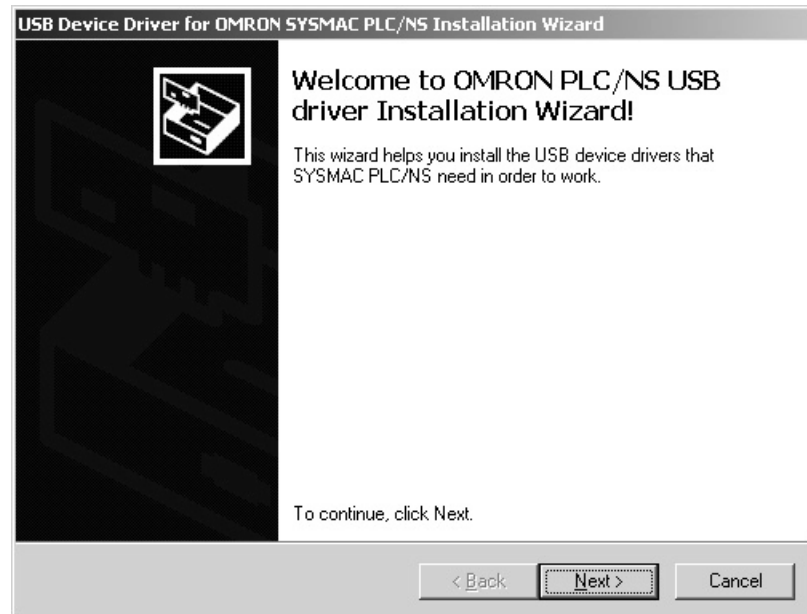
During installation wizard execution, the *Direct Ethernet Connection: Network Card Selection* Dialog Box is displayed.

22. Select the network card for connecting the Controller with an Ethernet cable from the computer that runs the Sysmac Studio, and then click the **OK** Button.



The network card for a direct Ethernet connection is selected and installation continues.

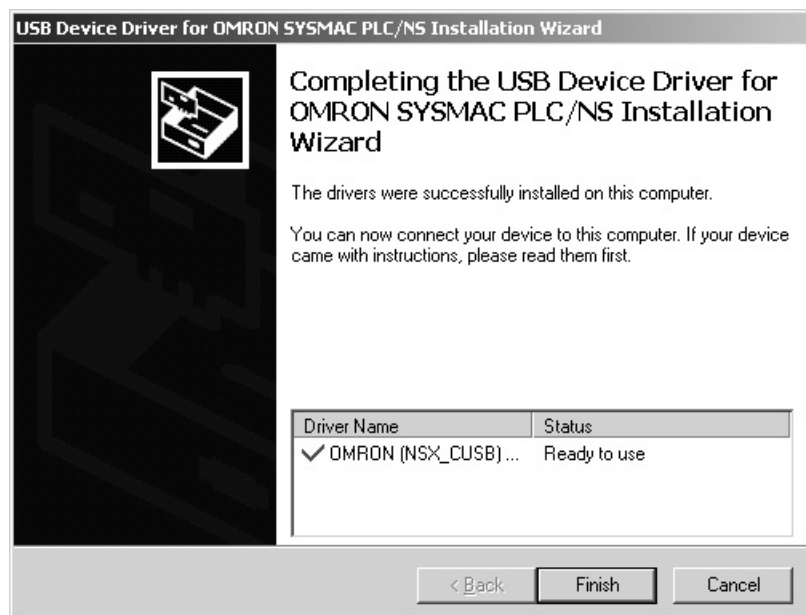
23. The OMRON SYSMAC PLC/NS USB Device Driver Installer will be displayed. Click the **Next** Button.



24. The following message will be displayed. Click the **Continue Anyway** Button.



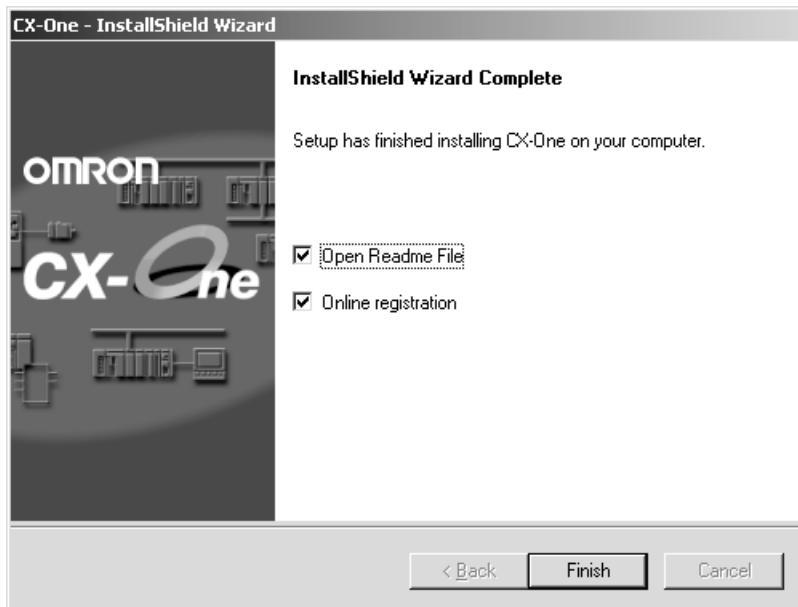
25. The following dialog box will appear after the USB device driver has been installed.



Click the **Finish** Button. Installation of the CX-One will be continued.

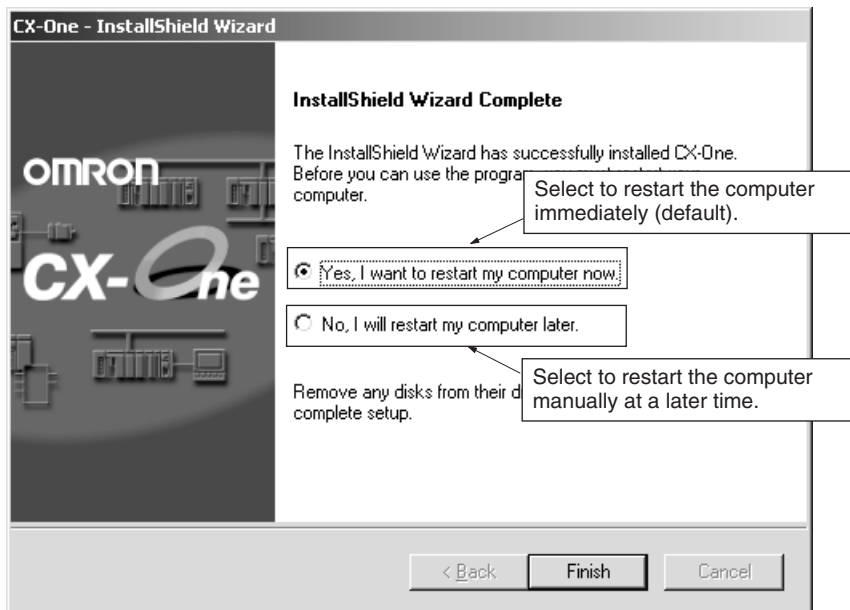
26. A dialog box that asks you to replace the disk will be displayed. Replace the installation disk (CD-ROM) as instructed by the message and click the **OK** Button.
This dialog box is not displayed if the software is being installed from a DVD.

27. The following dialog box will be displayed when the Installer completes the installation.



Click the **Finish** Button. The Readme file will be displayed.

The following dialog box will be displayed if restarting the computer is required.



Select the desired option and click the **Finish** Button. If the *Yes, I want to restart my computer now* Option is selected, the computer will be restarted and then the Readme file will be displayed.

Note (a) It may be necessary to restart Windows after finishing the installation. If required, restart Windows according to the messages displayed by the Installer.

(b) Always read the Readme.txt file before using the CX-One.

28. The Online Registration Dialog Box will be displayed when the Readme file is closed.



A wizard will be started and will connect to the OMRON CX-One website if the **Register** Button is clicked. (See notes a and b.)

Note (a) If the **Exit** Button is clicked to cancel registration, the Online Registration Dialog Box will be displayed every time CX-One Support Software is started.

(b) Online installation will not be possible if the computer is not connected to the Internet. Enter the required information on the registration card and mail it in.

This completes installation of the CX-One.

- Note**
- (1) Even if the previous versions for Support Software in the CX-One are uninstalled, the folders for the previous versions will remain in C:\Program Files\OMRON. By default, the project files and other files that were created by the Support Software (e.g., .cxp project files for CX-Programmer) will be in this directory. If this data is to be used by the CX-One, we recommended moving the files to suitable folders after installing CX-One.
 - (2) Any OMRON Support Software or Communications Middleware that is not included in CX-One will remain installed on the hard disk even after the CX-One is installed. This will not create any particular problems.

Examples:

- DeviceNet Configurator (Support Software)
- FinsGateway (Communications Middleware)

2-2 CX-One Maintenance

The following maintenance can be performed once the CX-One has been installed.

- 1,2,3...**
1. Modifying the installed Support Software in the CX-One
 2. Removing all the Support Software in the CX-One

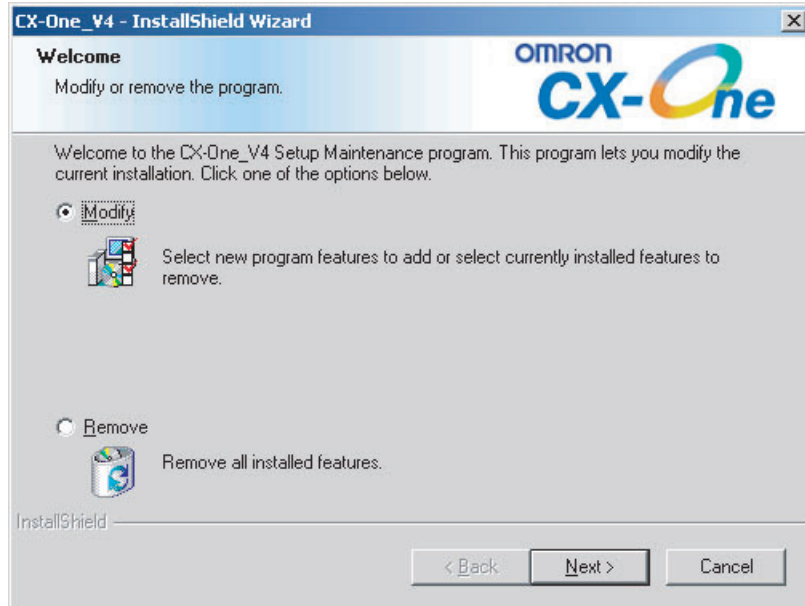
2-2-1 Modifying the Installed Support Software in the CX-One

The CX-One Support Software that is installed can be modified using the following procedure.

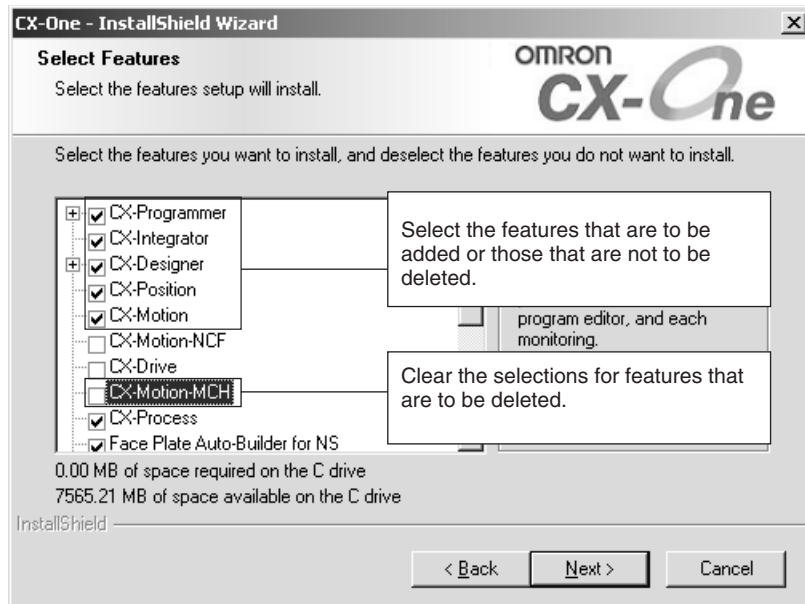
- 1,2,3...**
1. Insert disk of the CX-One installation disk (DVD) into the DVD drive.
 2. The Choose Setup Language Dialog Box will be displayed and the language of the operating system running on the computer will be selected automatically.
(If the following dialog box is not displayed, double-click the DVD driver from the Explorer to display it.)
Select the language to be installed and then click the **OK** Button.



3. A splash window for the CX-One will be displayed, and the installation modification process will start.
4. The CX-One Maintenance Wizard will be displayed. Select the *Modify* Option and click the **Next** Button.



5. The Select Features Dialog Box will be displayed. The features that are selected will change depending on the CX-One Support Software already installed in the computer. The CX-One installation will be modified according to the features selected here.



- Select the features to be added.
- Be sure that all features that are not to be deleted are selected.
- Clear the selections for features to be removed.

The following applications cannot be re-installed individually with the maintenance functions.

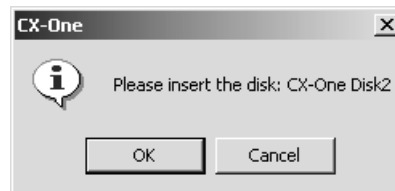
- CX-Integrator
- CX-Designer
- CX-Protocol
- Network Configurator

Note Any Support Software feature that is not selected here will be deleted from the compute. Check the selections carefully.

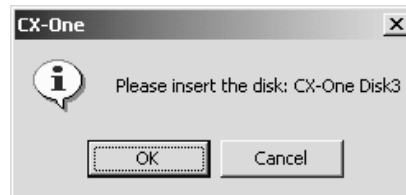
Click the **Next** Button.

The CX-One installation will be modified according to the feature selections. Continue with the installation procedure according to the messages displayed by the Installation Wizard.

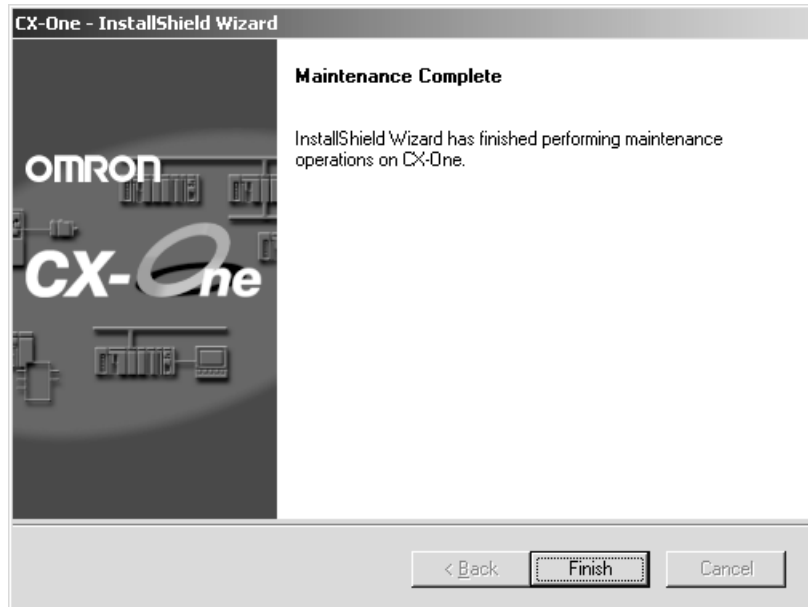
6. If either of the following dialog boxes is displayed, replace the installation disk (CD-ROM) as instructed by the message and click the **OK** Button. This dialog box is not displayed if the software is being installed from a DVD.



Alternatively:



- The following dialog box will be displayed when the Installer completes modifying the installation. Click the **Finish** Button.

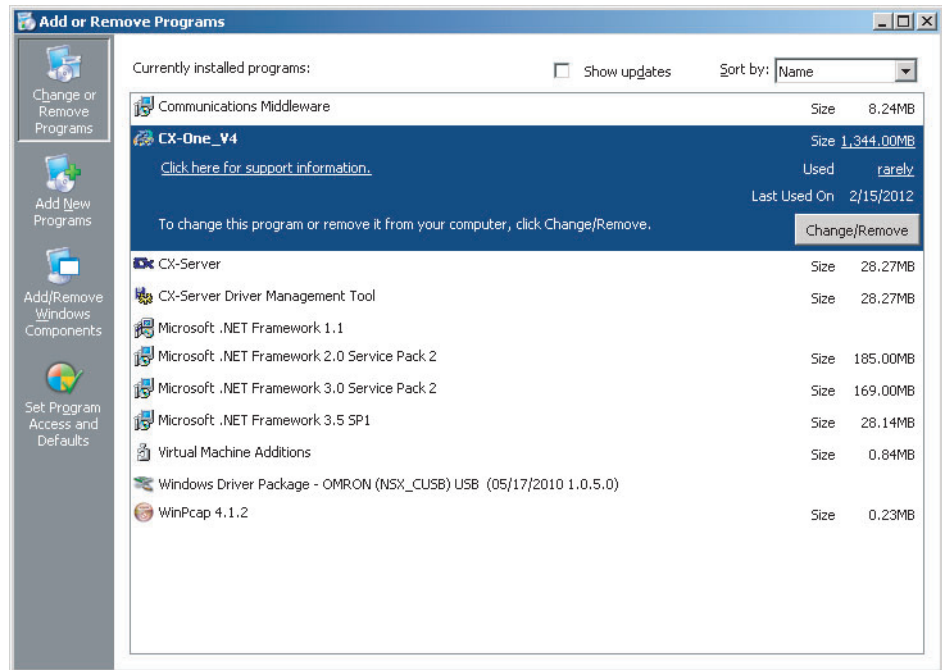


2-2-2 Removing all the Support Software in the CX-One

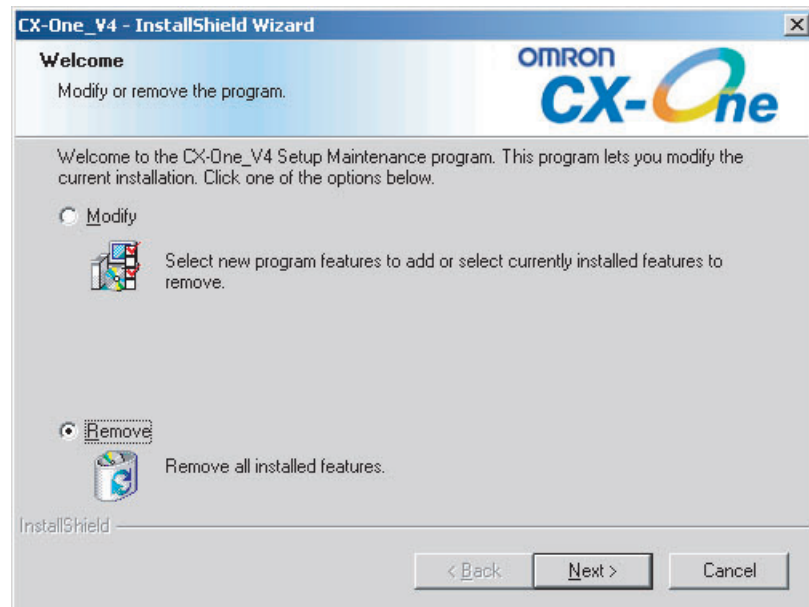
Use the following procedure to delete all of the Support Software in the CX-One from the computer.

Note The CX-Server will not be deleted from the computer even if all CX-One Support Software is deleted. The CX-Server must be uninstalled separately to delete it.

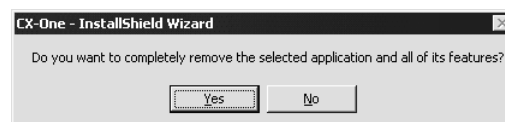
- 1,2,3...**
- Select **Start - Settings - Control Panel - Add/Remove Programs**. The Add/Remove Programs Dialog box will be displayed.
* With Windows Vista or a newer OS, select **Programs and Features or Uninstall Programs**.
 - Select **CX-One_V4** from the dialog box.
 - Click the **Change/Remove** Button.



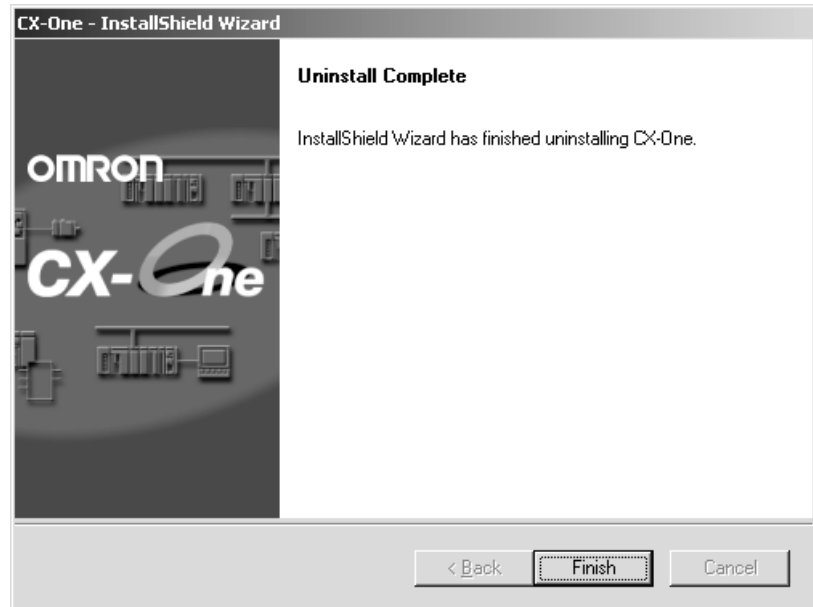
4. The CX-One Installation Wizard will be displayed. Select the *Remove* Option and click the **Next** Button.



5. The following dialog box will be displayed to confirm that all CX-One software is to be removed. Click the **Yes** Button to start the Uninstaller that will delete the CX-One and then follow the messages in the dialog boxes to delete the CX-One.



6. When the uninstallation has been completed, the following dialog box will be displayed. Click the **Finish** Button.



2-2-3 Uninstalling the CX-Server

Always uninstall the CX-Server Diver Management Tools before uninstalling the CX-Server.

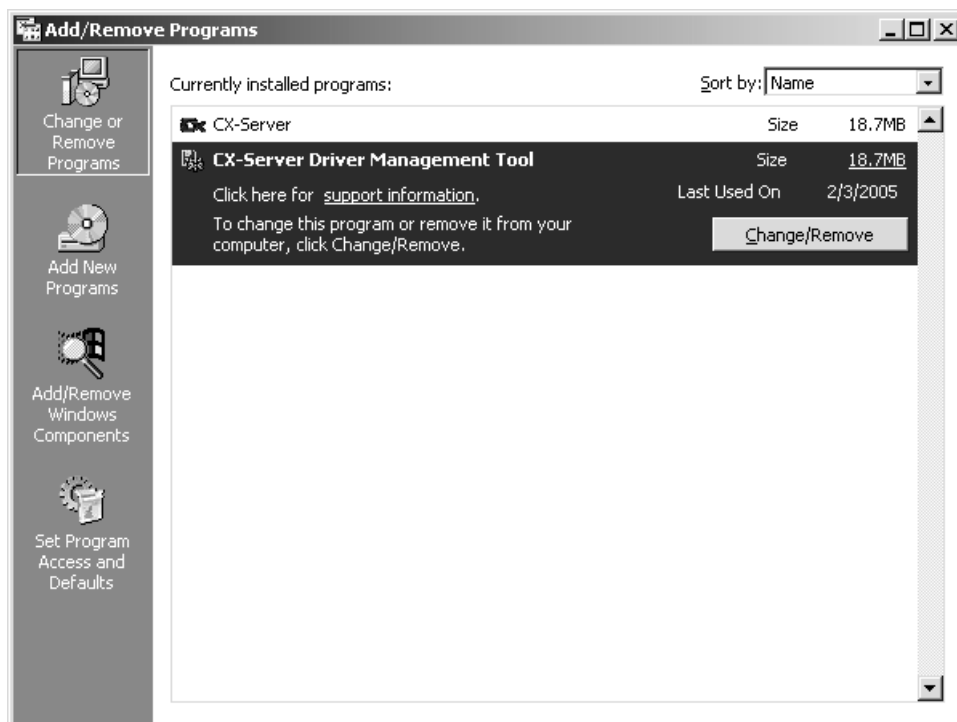
Note

- (1) Do not uninstall the CX-Server if there are other programs on the computer that use it as the communications driver, e.g., the CX-Programmer. If the CX-Server is uninstalled, it will no longer be possible to use these other programs.
- (2) Do not uninstall the CX-Server while other programs that use it as the communications driver are running on the computer, e.g., the CX-Programmer. The CX-Server may not uninstall properly if other programs are using it.
- (3) When uninstalling all of the CX-Server software, always uninstall the CX-Server Driver Management Tool before uninstalling the CX-Server. If the CX-Server is uninstalled first, it may no longer be possible to uninstall the CX-Server Driver Management Tool properly.

1,2,3...

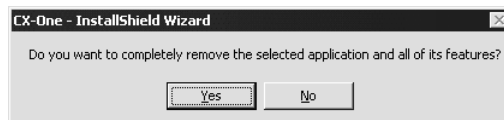
1. Select **Start - Settings - Control Panel - Add/Remove Programs**. The Add/Remove Programs Dialog Box will be displayed.

*With Windows Vista or a newer OS, select **Programs and Features or Uninstall Programs**.



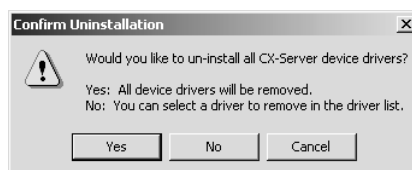
Select *CX-Server Driver Management Tool* from the dialog box and click the **Change/Remove** Button.

2. A file deletion confirmation dialog box will be displayed. Click the **Yes** Button.



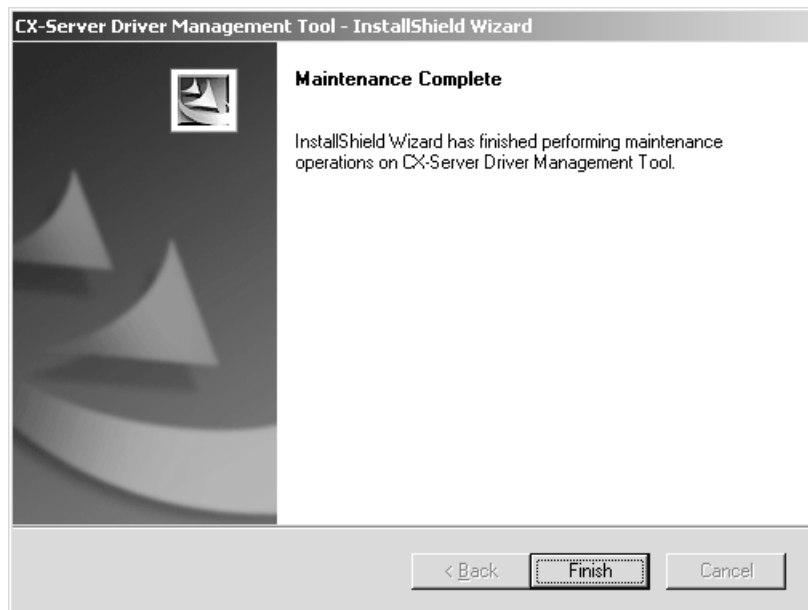
The CX-Server Driver Management Tool will be uninstalled.

3. An uninstall confirmation dialog box will be displayed. Click the **Yes** Button.



4. The CX-Server will be uninstalled.

When the uninstallation has been completed, the following dialog box will be displayed. Click the **Finish** Button. The Add/Remove Programs Dialog Box will be displayed again.



5. In the same way, select *CX-Server* from the Add/Remove Programs Dialog Box, click the **Change/Remove** Button, and uninstall the *CX-Server* by repeating steps 2 through 4.
6. Restart the computer when all programs have been uninstalled.

SECTION 3

Application Upgrades Using Auto Updates

This section describes the CX-One auto update function.

3-1	Outline	38
3-1-1	Auto Update	38
3-2	Using Auto Update	38
3-2-1	Preparations	38
3-2-2	Starting Auto Update	39
3-2-3	Checking Update Results	43
3-2-4	Uninstalling CX-One Updates	43
3-3	Periodic Notification of Auto Updates	43
3-3-1	Enabling Periodic Notification of Auto Updates	44
3-3-2	Update Notification	44

3-1 Outline

3-1-1 Auto Update

The CX-One auto update function is a system for updating the Support Software included with the CX-One over the Internet. When the CX-One auto update function is enabled, applicable updates for the CX-One Support Software are automatically found. The CX-One installed on the personal computer can be updated to the latest version by installing the updates that are found.

- The auto update function is automatically enabled when the CX-One is installed.
- The auto update function can be used for CX-One version 2.0 or higher.

3-2 Using Auto Update

3-2-1 Preparations

Points to Check Before Using Auto Update

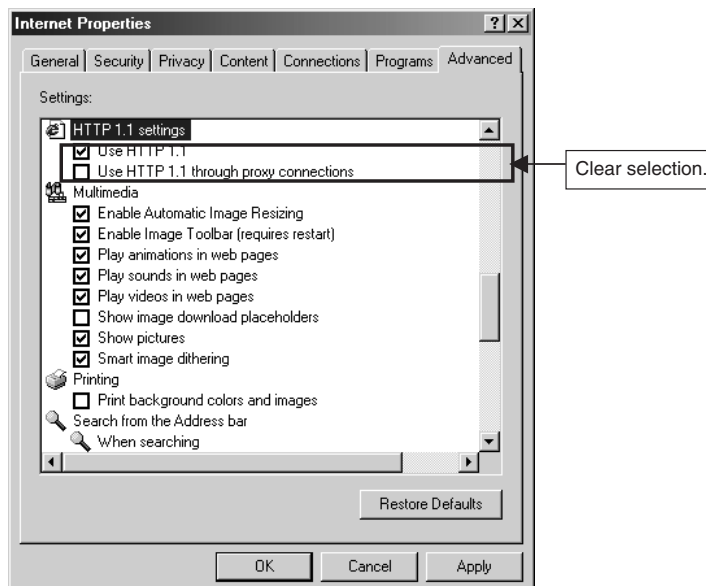
Be sure the following has been performed before using the auto update function.

- Log onto Windows as the administrator or as a user with administrator rights.
- Close all programs running on Windows.
- Connect to the Internet.

Note Downloading updates may fail or the size of updates may become unknown if a proxy server is used. Make the following settings if using a proxy server.

Example: Using Internet Explorer 5.01 or Higher

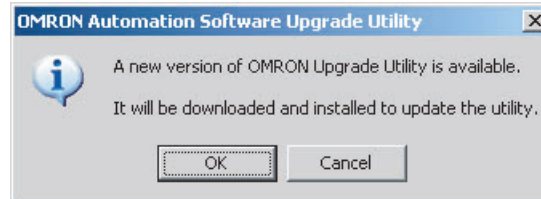
- 1,2,3... 1. Select **Start – Settings – Control Panel** and double-click the Internet Options Icon.
2. Clear the selection of the *Use HTTP1.1 through proxy connections* Option on the Advanced Tab Page.



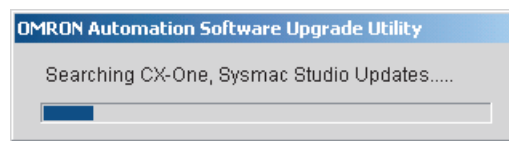
3-2-2 Starting Auto Update

- 1,2,3... 1. Select **Programs – OMRON – CX-One – OMRON Automation Software AutoUpdate** from the Windows Start Menu. The CX-One Upgrade Utility Dialog Box may be displayed saying that there are version updates available.

Click the **OK** Button.



2. The applicable updates will be searched for.

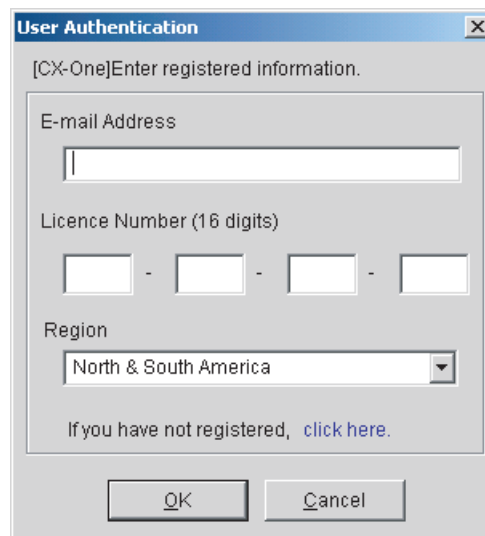


3. A user authentication dialog will be displayed when using the auto update service for the first time.

Enter the information listed below then click the **OK** Button.


The user authentication dialog will not be displayed for subsequent auto updates once an update has been installed.

Item	Details
Email address	Enter the email address you registered after purchase.
License No. (16 digits)	Enter the license number of the CX-One that you purchased.
Region	Select the region where the software was purchased. Japan Europe, Africa, Middle East North America, South America China Taiwan Korea South-east Asia, India, the Pacific region



Note If you have not registered, click **click here** to jump to the user registration website.

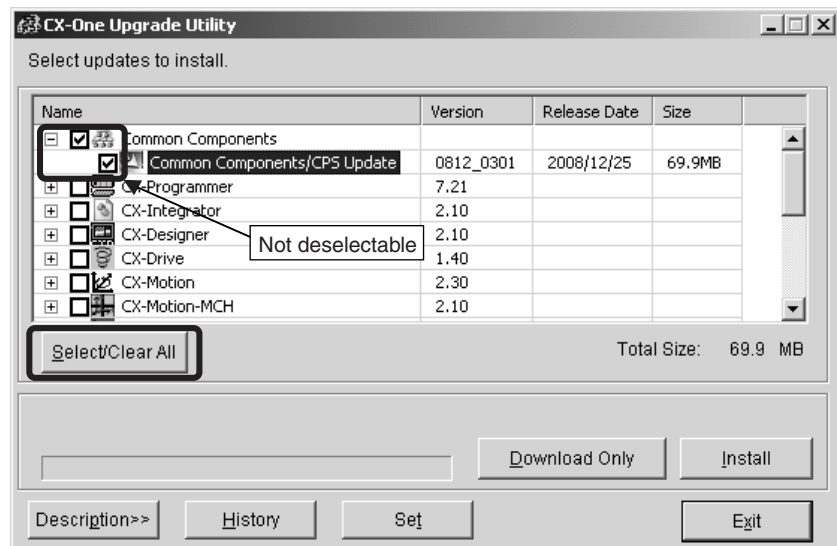
- The OMRON Automation Software Upgrade Utility will be started and then a list of installed applications will be displayed.

Click  to display applicable updates.

Name	Version	Release Date	Size
<input checked="" type="checkbox"/> Common Components			
<input checked="" type="checkbox"/> Common Components/CPS Update	0812_0301	2008/12/25	69.9MB
<input checked="" type="checkbox"/> CX-Programmer	7.21		
<input checked="" type="checkbox"/> CX-Integrator	2.10		

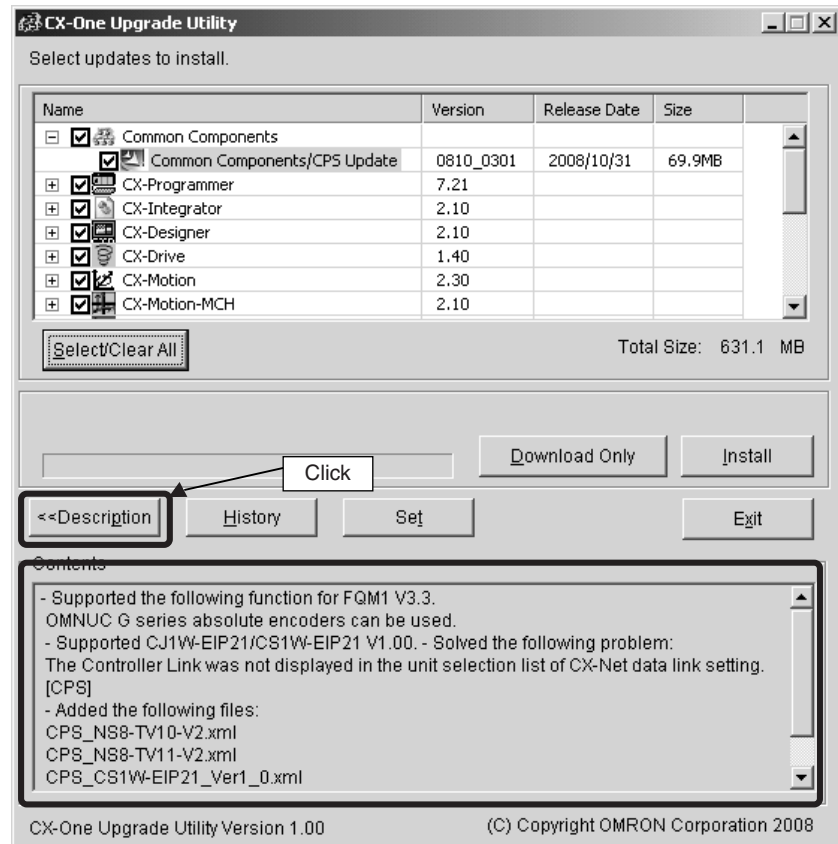
- All check boxes will be selected by default.

To select or clear all check boxes, click the Select/Clear All Button. It is not possible to clear the check box for common components.

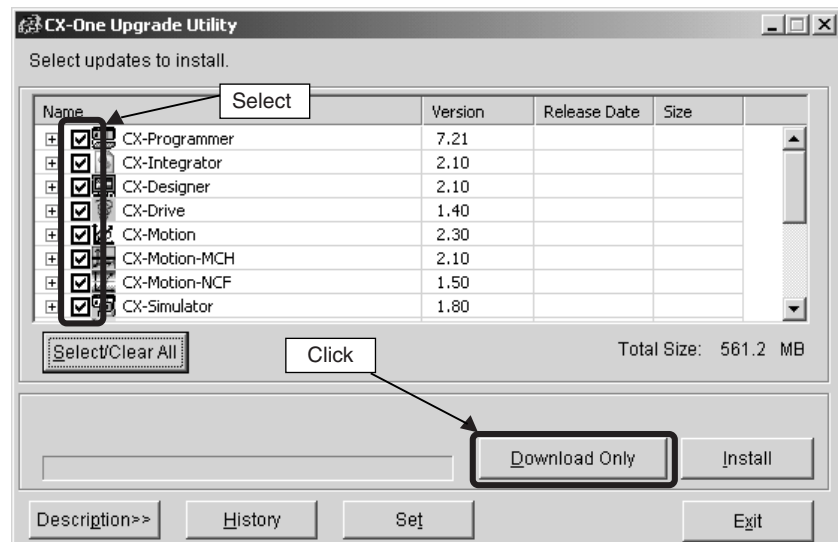


Note It is not possible to clear the check box for common components.

- Select an update and click the **Description>>** Button. A description of the update will be displayed.



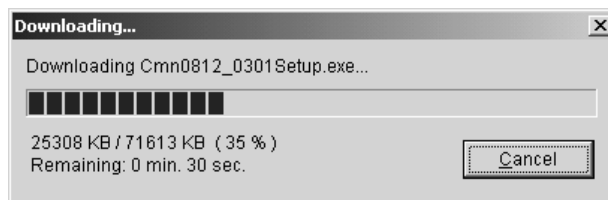
- Select the updates to be applied and click the **Install** Button.



Note The updates that will be displayed will depend on the CX-One version and individual applications installed on the personal computer.

- Click the **Download only** Button to save the update files to the computer for later installation. For details, refer to *Downloading Update Files for Later Installation* later in this section.

- Click the **Install** Button to download the selected updates. (If more than one update has been selected, they will be downloaded one-by-one in the order listed.)

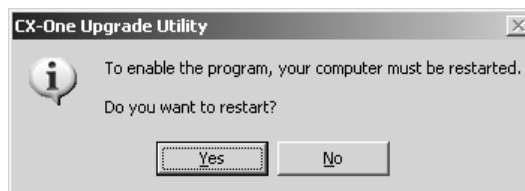


When the updates have been downloaded, installation will start automatically.

- When all installations have been completed, a message will be displayed asking if you want to restart your computer.

Click the **Yes** Button to restart the computer now.

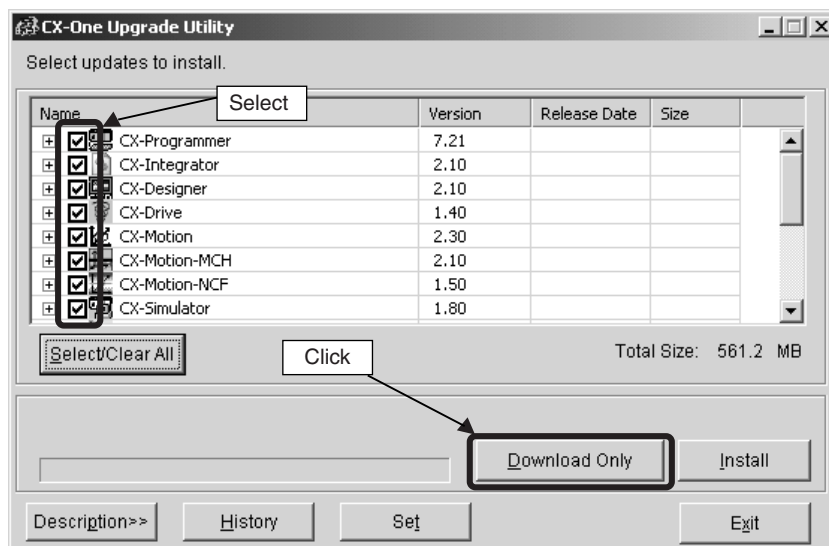
Click the **No** Button to restart the computer later.



Downloading Update Files for Later Installation

One of the update methods is to save the files needed for updating (called "update files") on the personal computer for later installation. The update files can be copied and used to update the CX-One installed on other computers not connected to the network.

- 1,2,3...** 1. In the list of possible updates in the OMRON Automation Software Upgrade Utility Dialog Box, select the updates to be downloaded and click the **Download Only** Button.



Note Multiple updates can be selected and downloaded at the same time.

- The **Browse For Folder** Dialog Box will be displayed.

Select the folder in which to save the update files and click the OK Button. Downloading the update files will be started.

3. Once the update files have been downloaded, a message saying the download has been completed will be displayed in the CX-One Upgrade Utility Dialog Box.
4. Double-click the files downloaded to the computer to begin installation. Follow the directions given by the Installer to install the update files.

Note If any updates are not installed, they will be displayed again as applicable updates.

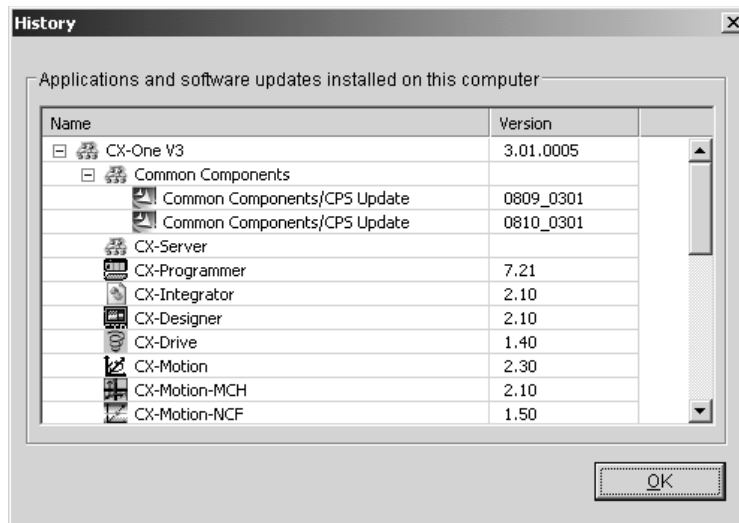
The update files can be deleted once they have been installed.

3-2-3 Checking Update Results

The results of the updates can be confirmed by the following method:

Click the History Button in the OMRON Automation Software Upgrade Utility Dialog Box to display a list of updates and applications installed on the computer.

Each version number can be checked.



3-2-4 Uninstalling CX-One Updates

Use the following procedure to return the CX-One that has been updated using the auto update function to its status prior to the updates.

- 1,2,3...**
1. Uninstall the following programs.
 - CX-One and CX-Server
 - The CX-Server driver management software
 2. Uninstall the CX-One.
 3. Reinstall the CX-One after it has been uninstalled.

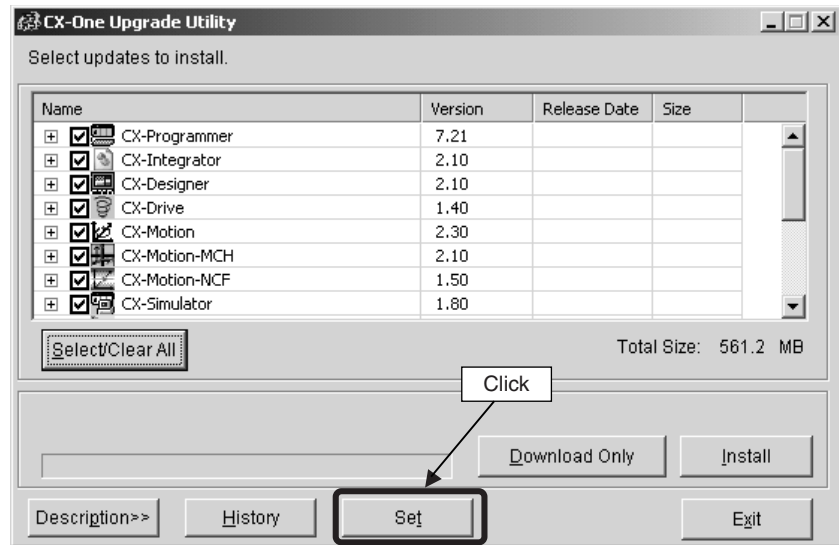
3-3 Periodic Notification of Auto Updates

The periodic notification function regularly checks for updates, and detects and provides notification of the latest update releases.

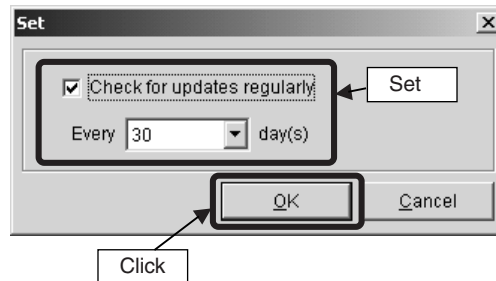
3-3-1 Enabling Periodic Notification of Auto Updates

Periodic notification of auto updates is disabled when the CX-One is installed. Use the following procedure to enable periodic notification of auto updates. Periodic update notification is enabled/disabled and the notification schedule settings are made using this procedure.

- 1,2,3... 1. To start OMRON Automation Software Upgrade Utility, select **Program – OMRON – CX-One – OMRON Automation Software AutoUpdate** from the Windows Start Menu.
2. Click the **Set** Button.



3. To enable periodic notification of auto updates, select the check boxes and set the notification schedule. (To disable the periodic notification of auto updates, clear the check boxes.)
4. Once the settings have been made, click the **OK** Button.



3-3-2 Update Notification

If periodic notification of auto updates is enabled, new updates will be searched for at the first login after the set time has elapsed. The OMRON Automation Software Upgrade Utility will be started if any applicable update is found. There will be no notification, if no applicable updates are found.

Appendix A

CX-One Lite

CX-One Lite

CX-One Lite (CXONE-LT□□□-V□) is a software package that contains the software from the CX-One package that is required for OMRON Micro PLC applications. This software provides support for the CP-series PLCs and the CPM□□/SRM1 PLCs from the C Series.

Software in CX-One Lite

CX-One Lite Version 4.□ Model Number

Name	Model	Software that can be installed		Data provided with the software
CX-One Lite Ver.4.□	CXONE-LT□□□-V4	CX-Programmer	Ver. 9	<ul style="list-style-type: none"> • Smart FB • Smart Active Parts (SAP) • CPS • Manuals (PDF)
		CX-Integrator	Ver. 2	
		CX-Simulator	Ver. 1	
		CX-Designer	Ver. 3	
		NV-Designer	Ver. 1	
		CX-Drive	Ver. 2	
		CX-Thermo	Ver. 4	
		Network Configurator	Ver. 3	
		CX-Finet	Ver. 1	
		CX-Server and PLC Tools	Ver. 5	
		SwitchBox	Ver. 1	

Applicable PLCs and System Requirements for CX-One Lite Software

Applicable PLCs

CX-One Lite provides support for PLCs with the following CPU Units.

Series	CPU Unit
CP Series	CP1H-XA40DR-A/XA-40DT-D/XA40DT1-D CP1H- X40DR-A/X-40DT-D/X40DT1-D CP1H-Y20DT-D CP1L-M60D□-□/M40D□-□/M30D□-□ CP1L-L20D□-□/L14D□-□/L10D□-□ CP1L-EL□□□□-□/EM□□□□-□ CP1E-E□□D□-A CP1E-N□□D□-□

Series		CPU Unit
C Series	CPM2□	CPM2A-20CD/30CD/40CD/60CD CPM2C-10CD/10C1D/20CD/20C1D/32CD
	CPM2□-S□	CPM2C-S100C/110C CPM2C-S110C-DRT
	CPM1/CPM1A	CPM1(A)-10CDR/20CDR/30CDR/40CDR(-V1) CPM1A-10CDT/20CDT/30CDT/40CDT(-V1) CPM1A-10CDT1/20CDT1/30CDT1/40CDT1(-V1)
	SRM1	SRM1-C01/C02(-V1) (-V2)

System Requirements

System requirements to run CX-One Lite software are the same as those for the CX-One. Refer to 1-4-1 System Requirements for the system requirements for the CX-One.

Available Hard Disk Space Requirements for CX-One Lite Software

CX-One Lite software	Available hard disk space requirement	Remarks
CX-Programmer	Approx. 330 MB	Check boxes are provided so that you can install only the required software.
CX-Drive	Approx. 200 MB	
NV-Designer	Approx. 110 MB	
CX-Simulator	Approx. 45 MB	
CX-Thermo	Approx. 130 MB	
Switch Box Utility	Approx. 5 MB	
CX-Integrator	Approx. 260 MB	Always install this software.
CX-Designer	Approx. 750 MB	
Network Configurator	Approx. 20 MB	
CX-Server and PLC Tools	Approx. 700 MB	

- Note**
- (1) For CX-One installation, hard disk space (1.2 GB min.) is also required to install .NET Framework in addition to the above hard disk space requirements.
 - (2) If the complete CX-One Lite package is installed, approximately 3.5 GB of hard disk space will be required. When installing the software, work space for installation is additionally required. Be sure you have sufficient available space before installing the software.

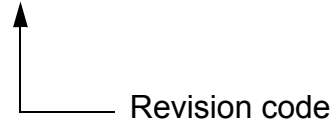
Installing CX-One Lite Software

The installation procedure for CX-One Lite software is the same as that for the CX-One software. Refer to SECTION 2 Installation and Uninstallation for the installation procedure for CX-One software.

Revision History

A manual revision code appears as a suffix to the catalog number on the front cover of the manual.

Cat. No. W463-E1-13



The following table outlines the changes made to the manual during each revision. Page numbers refer to the previous version.

Revision code	Date	Revised content
01	July 2006	Original production
02	July 2007	Made corrections accompanying upgrade of CX-One
03	August 2007	Cover, inner cover, and pages 3 and 4: Made corrections to CX-One model number suffixes. Page 10: Modified the version from "CX-One Ver. 2.1" to "CX-One Ver 2.1 or later."
04	June 2008	Added upgraded information of CX-One Ver.3.0.
05	February 2009	Added upgraded information of CX-One Ver. 3.1.
06	June 2009	Added upgraded information of CX-One Ver. 3.2.
07	December 2009	Added upgraded information of CX-One Ver. 4.0.
08	February 2010	Added information and made minor corrections.
09	May 2010	Added information and made minor corrections.
10	October 2010	Added upgraded information of CX-One Ver. 4.1.
11	April 2012	Revised Content Added Information and made minor corrections.
12	October 2013	Made corrections for Windows 8 support. Corrected mistakes.
13	April 2016	Support for Windows 10. Made corrections for change in model number of CX-One.

Revision History

OMRON Corporation Industrial Automation Company
Kyoto, JAPAN

Contact: www.ia.omron.com

Regional Headquarters

OMRON EUROPE B.V.

Wegalaan 67-69, 2132 JD Hoofddorp
The Netherlands
Tel: (31)2356-81-300/Fax: (31)2356-81-388

OMRON ELECTRONICS LLC

2895 Greenspoint Parkway, Suite 200
Hoffman Estates, IL 60169 U.S.A.
Tel: (1) 847-843-7900/Fax: (1) 847-843-7787

OMRON ASIA PACIFIC PTE. LTD.

No. 438A Alexandra Road # 05-05/08 (Lobby 2),
Alexandra Technopark,
Singapore 119967
Tel: (65) 6835-3011/Fax: (65) 6835-2711

OMRON (CHINA) CO., LTD.

Room 2211, Bank of China Tower,
200 Yin Cheng Zhong Road,
PuDong New Area, Shanghai, 200120, China
Tel: (86) 21-5037-2222/Fax: (86) 21-5037-2200

Authorized Distributor:

© OMRON Corporation 2006-2016 All Rights Reserved.
In the interest of product improvement,
specifications are subject to change without notice.

Cat. No. W463-E1-13

0416